



**Reliability In Action**

# **ER6155H**

## **Hydraulic Excavator**

**Operating weight: 15700 kg**

**Bucket capacity: 0.55 m<sup>3</sup>**

**Engine power: 86 kW**



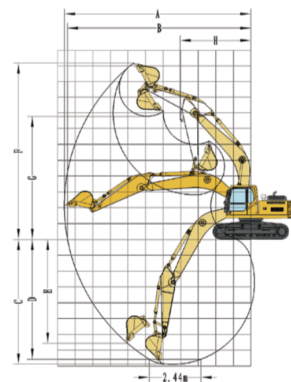
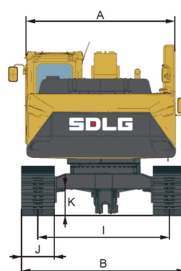
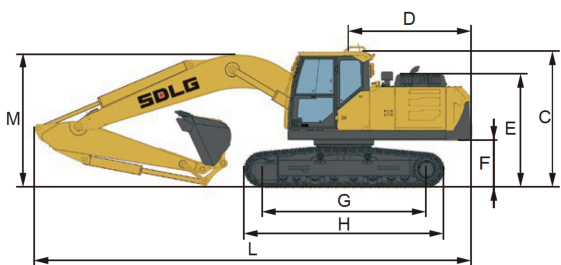
**Powerful And Adaptable**

**Reliability And Durability**

**Safety And Comfort**

# ER6155H

## Main specifications



### Specifications

Operating weight(kg)	15700
Bucket capacity(m <sup>3</sup> )	0.55
Boom length(mm)	4600
Arm length(mm)	2500

### Engine

Engine Model	QSF3.8T3TC115
Engine Type	Four-stroke, four cylinders, turbocharged, inter-cooled
Emission	Stage IIIA
Engine power(kW)	86
Rated engine speed(r/min)	2200
Maximum torque (N.m)/rotation speed (r/min)	470/1320
Displacement(ml)	3800

### Main performance

Traveling speed (low/high) (km/h)	3.5/4.7
Slewing speed (r/min)	11
Gradeability (°)	35
Average ground pressure (kPa)	46.8
Bucket Digging Force (ISO) (kN)	93.9
Arm Digging Force (ISO)(kN)	65

### Service capacity

Fuel tank(L)	240
Hydraulic oil tank(L)	100
Engine oil(L)	12
Hydraulic system(L)	175
Cooling system(L)	24

### Overall specifications Unit: mm

A Overall width of upper assembly	2500
B Overall width	2500
C Overall height of cab	2820
D Tail swing radius	1490
E Overall height of engine hood	2240
F Counterweight clearance	935
G Wheel base	3040
H Track length	3740
I Track gauge	1990
J Track width	500
K Min. ground clearance	455
L Overall length	7480
M Overall height of boom	2700

### Overall range Unit: mm

A Max. digging reach	8430
B Max. digging reach on ground	8280
C Max. digging depth	5190
D Max. digging depth (horizontal 2.44 m)	4970
E Max. vertical wall digging depth	4610
F Max. cutting height	9055
G Max. dumping height	6585
H Min. front swing radius	2240

### Travelling section

Number of carrier roller (one side)	1
Number of supporting wheel (one side)	7
Track shoe width (mm)	500

### Standard configuration

Cummins QSF3.8
4.6m Boom&2.5m Arm
Fully Electronically Controlled Hydraulic System
Hydraulic Drive
ROPS Cab (with air conditioner)
Pipeline for Hammer and Shear+X3, Hydraulic Quick Connector
GP Bucket 0.55m <sup>3</sup> ×1030
Dozer Blade
Heavy Duty Front Protective Guard for CAB

### Optional equipment

GP Bucket 0.6m <sup>3</sup> ×1090 (general earthwork conditions)
GP Bucket 0.8m <sup>3</sup> ×1110 (light materials)
Rock Bucket 0.52m <sup>3</sup> ×1016 (heavy duty)
Hammer φ100
Fuel Pump
LED Rotating Beacon
Front Lower Guard/Front Upper Protective Guard
600/700/800mm Track Shoe
Thumb Clamp

\* SDLG reserves the right to change specifications and materials at any time without prior notification. Features of the machine in photos may include additional equipment. If you need more information and available options, please contact your local distributor or SDLG.



## Shandong Lingong Construction Machinery Co., Ltd.

Add: Lingong Industry Park, Economic Development Zone, Linyi, Shandong, P.R.China  
Tel: 0086-531-66590505 Fax: 0086-531-66590505 E-mail: export@sdlg.com Website: www.sdlg.com