

Shandong Lingong Construction Machinery (SDLG), first established in 1972, is a leading international manufacturer of construction machinery, and the national-level high-tech company. Main products include loaders, excavators, road construction machinery, and core key components.

In October 2019, SDLG was awarded the Excellence Award (European Quality Award). This achievement made SDLG the first Chinese enterprise to hold three prestigious quality honors: the National Quality Award, Asian Quality Excellence Award, and European Quality Award.

"Take the route of top brand, build a centennial SDLG", SDLG is working hard to build the leading international manufacturer of construction machinery. By making the intensive and innovative development, it aims to become the most satisfying and recommendable brand in the construction machinery industry.



Reliability in Action

L968HEV
Electric Wheel Loader



Congratulations to SDLG on winning the EFQM Global Excellence Award One of the world's top three quality awards



Shandong Lingong Construction Machinery Co., Ltd.

Add: Lingong Industry Park, Economic Development Zone, Linyi, Shandong, P. R. China
Tel: + 86-531-66590505 Fax: + 86-531-66590505 E-mail: export@sdlg.com Website: www.sdlg.com



Mature platform

- ◆ The large - span articulation, rational load distribution, and high - stability design, combined with the new sealing method, enhance reliability and service life.
- ◆ The hydraulic cylinder uses a reinforced design to prevent leakage and cylinder scoring. Optimizes the hydraulic pipeline layout to reduce oil pipe wear and interference, ensuring high reliability.
- ◆ Integrates lightweight high-strength technology, optimizing the working device to enhance strength and reduce weight.

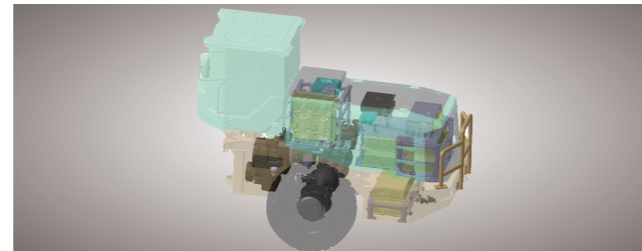
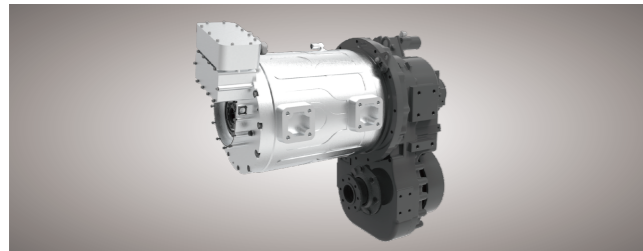


- ◆ Equipped with SDLG self-made reinforced drive axle and reinforced drive shaft. The transmission components undergo strengthening treatment using new processes, optimizing the transmission ratio to better suit heavy-duty working conditions.
- ◆ The entire wiring harness adopts waterproof, dustproof, and anti-loosening designs. Connectors are fixed in close proximity to improve reliability and enhance safety. The front light frame incorporates shock-absorption measures to reduce damage to the headlights from the entire machine.



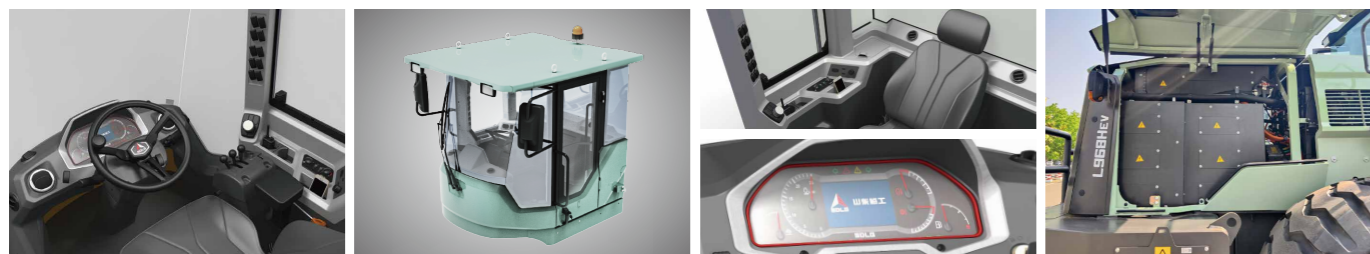
Reliable Components

- ◆ Battery: Adopts advanced lithium battery technology, boasting high unit energy density and strong advantages in battery capacity, safety, charging/discharging, and energy endurance.
- ◆ Motor: Employs a permanent-magnet synchronous motor with variable-frequency speed regulation, offering high power, reliability, and long service life.
- ◆ Electronic Control: The electronic control platform is rationally structured with a high degree of autonomy and precise control, allowing secondary setting adjustments based on customer needs.
- ◆ Electric Drive Box: Independently developed to optimize the power transmission route of the electric loader. The machine features excellent dynamic performance, fast acceleration, and rapid response; with stepless speed change and automatic shifting, operation is light and comfortable.
- ◆ Lighting System: The entire vehicle is equipped with LED lights.
- ◆ Cable: Uses well-known industry brands, ensuring wear resistance, tensile strength, and long service life.

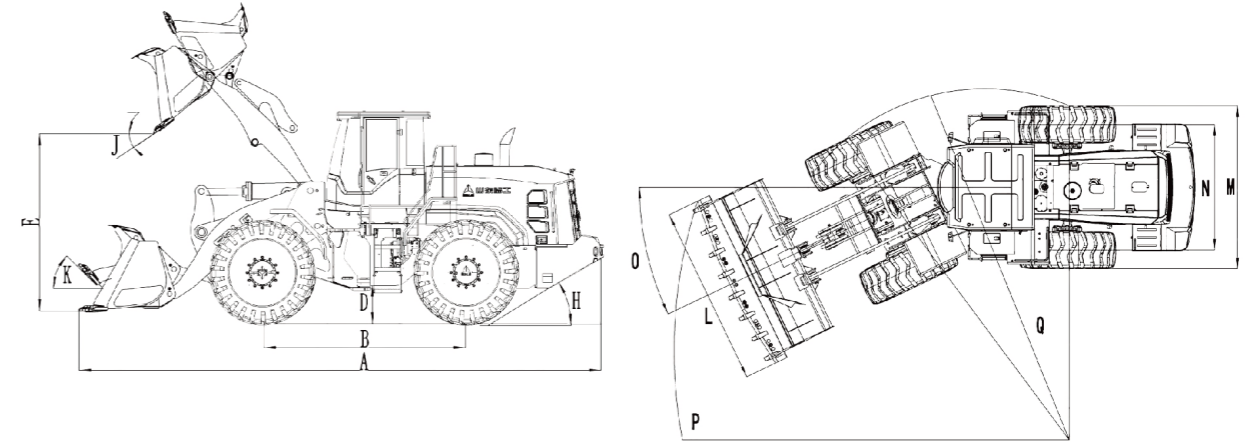


Intelligent Comfort and Convenient Maintenance

- ◆ Equipped with an intelligent control system using deep learning. The system automatically adjusts power output based on load, vehicle speed, and other conditions, ensuring high operational efficiency.
- ◆ It adopts SDLG thermal management system: the battery, motor, and electronic control are all equipped with a thermal management system. This system can intelligently adjust heat dissipation power according to heat generation, guaranteeing system safety, stability, and a high level of intelligence.
- ◆ Featuring SDLG H-type cab with ergonomic design, the button layout is reasonable, offering ample space and good visibility. The high-grade suspended seat allows multi-angle and multi-dimensional adjustments. An adjustable steering column, beverage cooler, and heating/cooling air conditioner are also included, ensuring excellent comfort.
- ◆ The machine is equipped with a 7-inch LCD screen for bus transmission, displaying rich information. With bus audio and Keypad virtual operation, it achieves high human-machine interactivity.
- ◆ The machine adopts SDLG large-opening engine cover, facilitating inspection and maintenance. The electrical system uses a centralized control mode, simplifying maintenance and detection. A standard fault diagnosis interface is included, enabling easy detection and maintenance of electrical components.



L968HEV Main parameters



Item	Parameter	Item	Parameter	Item	Parameter
Overall Dimensions		Electric system		Working Device Hydraulic System	
Length×Width×Height (A×L×C)	9590×3100×3550 mm	Battery Type	Lithium Iron Phosphate Battery	Type	Hydraulic Pilot Control
Wheelbase (B)	3500 mm	Battery Capacity	350 kW·h	Total cycle time	≤10.3s
Minimum Ground Clearance (D)	530 mm	Battery Voltage	579.6 V	Working Device Hydraulic System Pressure	21 MPa
Maximum Dumping Height (E)	3560 mm	Charging Type	DC	Braking system	
Corresponding Dumping Distance (G)	1290 mm	Battery Endurance Life	4-6 h	Service Brake Type	Full Hydraulic Braking
Dumping Angle (J)	-45°	Hydraulic System		Parking Brake Type	Handbrake
Wheel Gauge (N)	2320 mm	Drive Motor Rated Power	125 kW	Steering system	
Horizontal Passing Radius (Outside of Bucket, P)	7400 mm	Drive Motor Rated Torque	1200 N·m	Type	Load sensing full hydraulic
Minimum Turning Radius (Outside of Rear Wheel, Q)	6240 mm	Drive Motor Peak Power	240 kW	Steering System Working Pressure	16 MPa
Overall Machine Parameters		Drive Motor Peak Torque	2600 N·m	Service Capacities	
Bucket Capacity	3.0-6.0 m ³	Transmission Type	Planetary Power Shift	Hydraulic Oil	240 L
Rated Load	6500 kg	Gears	F2R1	Battery Cooling	20 L
Operating weight	22300 kg	Transmission Working Pressure	1.5 MPa	Motor Cooling	25 L
Maximum Tractive Force	180 kN	Main Drive Type	First reduction of spiral bevel gear	Front/Rear Axle	40/36 L
Max. Breakout Force	≥200 kN	Wheel reduction type	One-stage planetary reduction	Traveling motor gearbox	45 L
Tipping Load	≥130 kN	Drive type	4WD	Superstructure motor gearbox	6 L

*The right of final interpretation of the abovementioned parameters shall be reserved by SDLG. No further notice will be given in case of any change, illustrations in the text may not always be the standard illustrations for this model.