

Reliability in Action



# RS7220H

## Fully Hydraulic Single-Drum Vibratory Road Roller



### Customer service is first priority

SDLG focuses on delivering outstanding customer service throughout a machine's life cycle. Its integrated service management system monitors and analyzes the machine's functions to ensure that it is working at optimum capacity, while service alerts notify customers about forthcoming maintenance checks. SDLG's attention to detail is one of the ways it continues to be the industry's No. 1 in terms of customer service satisfaction.

### Value-added service

SDLG's aftercare promise guarantees high quality service and offers experts who are on-hand to answer any questions or to solve problems. SDLG's service team uses advanced technology to support its maintenance checks in the field. Moreover, it aims to work with customers to define an efficient business solution.

### Global service network

SDLG's worldwide service and spare parts network provides fast, efficient and professional round-the-clock service, anytime, anywhere. SDLG exceeds customers' expectations.



Congratulations to SDLG on winning  
the EFQM Global Excellence Award  
One of the world's top three quality awards



### Shandong Lingong Construction Machinery Co., Ltd.

Add: Lingong Industry Park, Economic Development Zone, Linyi, Shandong, P. R. China  
Tel: + 86-531-66590505 Fax: + 86-531-66590505 E-mail: export@sdlg.com Website: www.sdlg.com

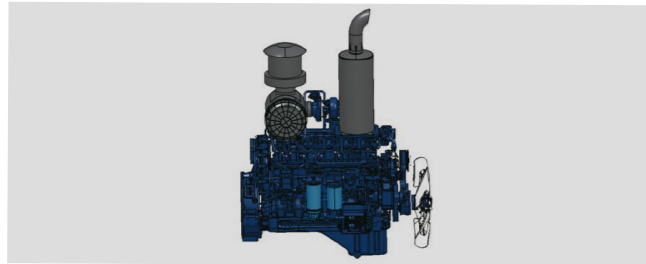


# RS7220H

## Fully Hydraulic Single-Drum Vibratory Road Roller

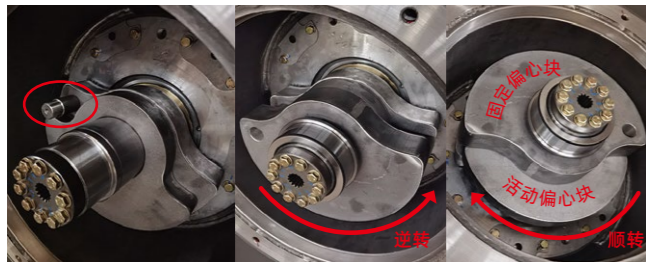
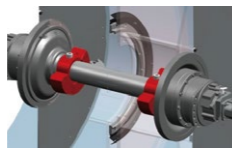
### STRONG POWER

- ◆ Matching Weichai six cylinder engine, strong power, large quantity, convenient to buy parts



### ADVANCED STRUCTURE DESIGN

- ◆ Independent split vibration mechanism at both ends, uniform distribution of eccentric force, compaction effect is better than the same industry
- ◆ Four vibration bearing support, good rigidity, low oil temperature, high reliability



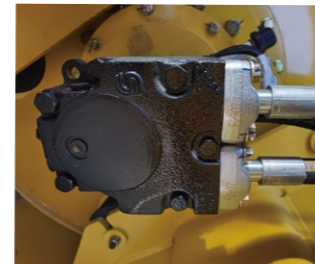
### Brand new appearance and interior

- ◆ H series new cab, cambered front windshield, anti-knock, wide vision; Enlarge the rearview mirror to improve the rear view
- ◆ LED headlights; front and rear wiper, electric hood lifting, convenient and reliable operation
- ◆ luxury and high-end trim, comfortable and convenient for operation
- ◆ LCD color multifunctional instrument, Display rich content



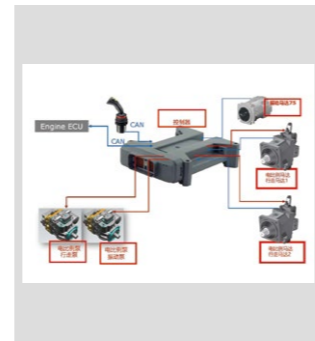
### HIGH WORKING EFFICIENCY

- ◆ Famous brand DANFOSS 75ml/r big displacement vibrating motor, High excitation force(420KN/295KN),fast response speed ,high compaction efficiency
- ◆ DANFOSS trveling motor,fast walking speed(3.9-10.7km/h),high working efficiency



### VARIABLE HYDARULIC SYSTEM,LOWER FUEL CONSUMPTION

- ◆ The hydraulic system of walking and vibration adopts electric proportional variable control, reasonable matching, greatly reducing fuel consumption, good economy

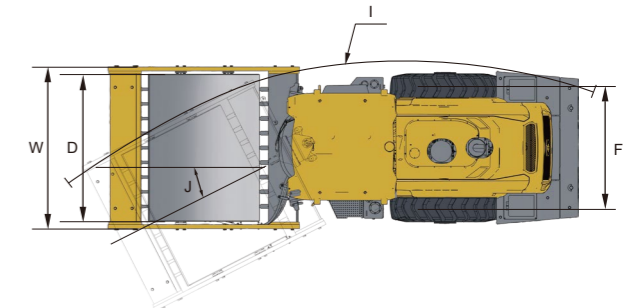
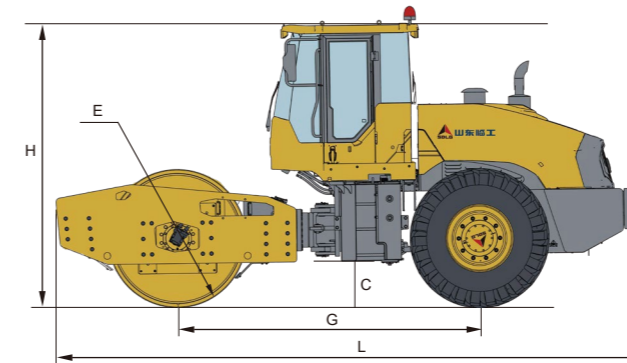


### EASY MAINTENANCE

- ◆ Engine filter is centrally located on one side, fuse control box centrally arranged, easy to do maintenance and repair
- ◆ The electric hood have a large opening and closing angle for easy maintenance



### Main performance and parts specifications



Item	Specifications
<b>Overall dimensions</b>	
LxWxH	7020x2416x3268mm
Width of vibratory drum(D/E)of vibratory drum	2150mm
Wheel tread	1610mm
Wheelbase	3613mm
Min.ground clearance	460mm
Min.turning radius	6820mm
Compaction width	2150mm
Theoretical gradeability	0.3
Turning angle	±35°
<b>Overall performance</b>	
Operating weight	22000kg
Front wheel distributed weight	14100
Rear wheel distributed weight	7900
Nominal amplitude (high/low)	2.0/1.0
Frequency	28/33Hz
Excitation force (high/low)	420/295kN
Static linear load	642N/cm
<b>Engine</b>	
Model	WP6G200E331
Type	Inline, water-cooled, four-stroke, direct injection
Rated Power/Speed	147kW
Engine displacement	6750ml
Cylinder bore /stroke	105/130mm
Emission standard	GB 20891-2014 (China phase III)
Min. Fuel-consume ratio	≤200g/kW.h

Item	Specifications
Max.torque	860N.m
<b>Transmission system</b>	
Clutch type	-
Transmission type	-
Gears	Forward 4 & reverse 4
Speed at gear I	0~3.9km/h
Speed at gear II	0~5.5km/h
Speed at gear III	0~6.3km/h
Speed at gear IV	0~10.1km/h
<b>Brake system</b>	
Service brake type	Closed hydraulic system shutoff pressure
Parking brake type	Spring-applied,multi-disc brake,hydraulic released
<b>Steering system</b>	
Type	Open-type system
System pressure	14Mpa
Swing angle	±12°
<b>Vibratory system</b>	
Type	Closed system
System pressure	-
<b>Fill capacity</b>	
Fuel	300L
Hydraulic oil	93L
Engine	16L
Transmission	-
Drive axle (main drive and wheel reducer)	25L
Brake system	-

\*The right of final interpretation of the abovementioned parameters shall be reserved by SDLG. No further notice will be given in case of any change. Illustrations in the text may not always be the standard illustrations for this model.