



STR1000H

SDLG Stand-on Track Loader
1.58 t (3,483 lbs) | 17.4 kW (23.3 hp)

● Highlights

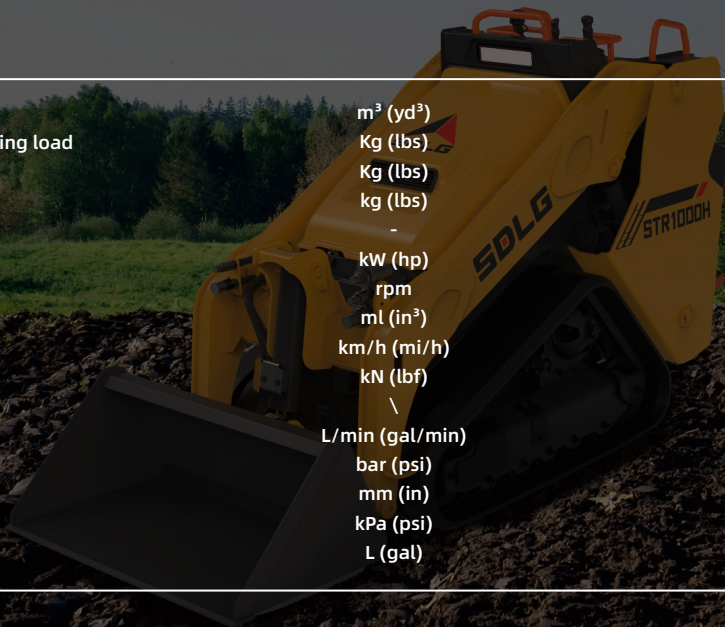
- The unit features a compact body design, allowing it to excel at handling various tough tasks in tight working environments.
- Conveniently arranged operational platforms and autonomous electric control programs deliver an unparalleled driving experience and enhanced productivity.
- The DA anti-stall system, safety lockout system, and operator presence control system ensure safe and reliable driving.
- Standard with the third and fourth auxiliary functions, the flow rate reaches up to 14.5gal/min, and it can be equipped with a lawn mower, auger, pallet fork, bucket, and other attachments.
- The front upper hood flips backward, and the operating platform can be rotated open for convenient daily maintenance and repair.



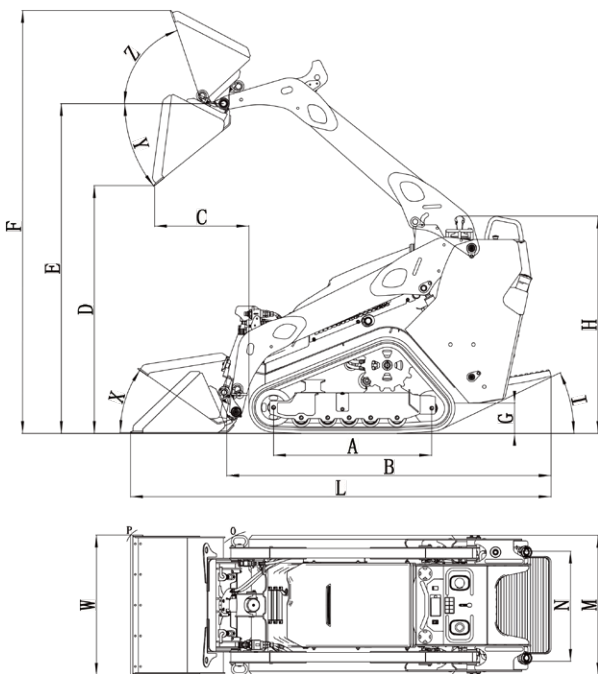
Reliability In Action

Specifications

Standard bucket capacity	m ³ (yd ³)	0.13 (0.17)
Rated operating capacity -35% tipping load	Kg (lbs)	453 (1,000)
Tipping load	Kg (lbs)	1,295(2,855)
Operating weight	kg (lbs)	1,580 (3,483)
Engine model	-	Kubota D902-T
Rated power	kW (hp)	17.4 (23.3)
Rated engine speed	rpm	2,800
Displacement	ml (in ³)	898 (54.8)
Speed (F/R)	km/h (mi/h)	0-7.5 (4.7)
Breakout force	kN (lbf)	11 (2,473)
Attachment Mounting System	\	CI (Common Industry Interface)
Auxiliary hydraulic flow	L/min (gal/min)	55 (14.5)
Auxiliary hydraulic pressure	bar (psi)	200 (2,900)
Track Width	mm (in)	250 (9.8)
Ground pressure	kPa (psi)	27.2 (3.9)
Fuel tank	L (gal)	30 (7.9)



Dimensions



A Length of track on ground	mm (ft in)	1,030 (3'4.6")
B Length without bucket	mm (ft in)	2,021 (6'7.6")
C Reach at max. lift and dump	mm (ft in)	550 (1'9.7")
D Dump height at max. lift	mm (ft in)	1,560 (5'1.4")
E Bucket hinge pin height at max. lift	mm (ft in)	2,150 (7'0.6")
F Max. overall height	mm (ft in)	2,830 (9'3.4")
H Height to top of cab	mm (ft in)	1,440 (4'8.7")
I Departure angle	°	25.5
G Ground clearance	mm (ft in)	190 (7.5")
L Overall length	mm (ft in)	2,740 (8'11.9")
M Width without bucket	mm (ft in)	910 (2'11.8")
N Track gauge	mm (ft in)	660 (2'2")
O Turning radius from center - Coupler	mm (ft in)	795 (2'7.3")
P Turning radius from center - Bucket	mm (ft in)	1,550 (5'1")
W Bucket width	mm (ft in)	914 (36")
X Bucket rollback angle (ground level)	°	24.5
Y Max. dump angle	°	45
Z Rack back angle at maximum Height	°	89.6

*SDLG reserves the right to change specifications and materials at any time without prior notification. Features of the machine in photos may include additional equipment. If you need more information and available options, please contact your local distributor or SDLG.



Congratulations SDLG for winning EFQM Global Excellence Award, one of the top three quality awards in the world.

SDLG is a leading international manufacturer of construction machinery, and the national-level high-tech company, with a wide network of dealerships and service workshops throughout the world.

SDLG North America Corp.

Head Office: 14155 West Hardy Road Houston, TX 77060
Website: www.sdlg.com Email: info@sdlgna.com