



**Reliability In Action**

# **G9220H MOTOR GRADER**

**Operating weight: 16500~17100 kg**

**Length of Blade: 14 ft**

**Engine power: 169 kW**



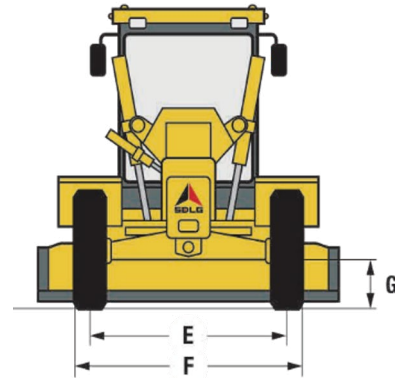
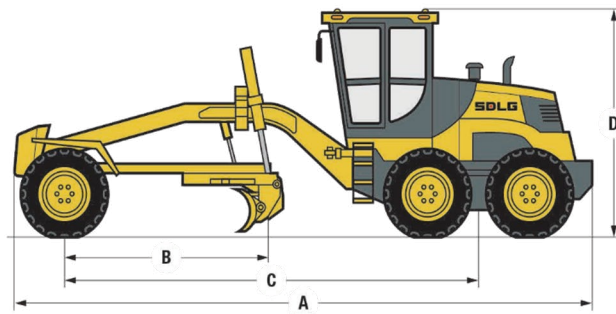
**Reliable & Efficient**

**Energy-saving & Comfortable**

**Safe & Convenient**

# G9220H

## Main specifications



Dimensions	ZF 6WG200   Hangchi 6WG180
A Overall length(mm)	8975   9235
C Wheel base(mm)	6480
D Overall height(mm)	3240
E Width - front axle centre lines(mm)	2270
F Width - outside tyres(mm)	2710
G Front axle ground clearance(mm)	610

Overall Machine Parameters	ZF 6WG200   Hangchi 6WG180
Operating weight(kg)	17100   16500
Over front wheels(kg)	5300   4900
Over rear wheels(kg)	11800   11600
Maximum Inclination Angle of Front Wheel (°)	±18
Maximum Swing Angle of Front Axle (°)	±16
Maximum Steering Angle of Front Wheel (°)	±50
Frame Articulated Steering Angle (°)	±23
Disk Diameter (mm)	1626
Blade Dimensions (mm)	4267×575×25
Blade Rotation Angle (°)	360
Minimum Turning Radius (m)	7.6
Blade Lifting Height (mm)	420
Blade Cutting Depth (mm)	787
Blade Cutting Angle (Forward/Backward)(°)	43   47
Blade Inclination Angle (°)	90
Maximum Traction Force ( $\mu = 0.75$ ) (kN)	86.7   85.3
Maximum Forward Speed (km/h)	39   38.4
Maximum Reverse Speed (km/h)	25.5   23

Transmission System	
Transmission Model	Counter-shaft Power Shift
Gears	Forward 6 & Reverse 3

Engine	
Model	BFM8-22T2
Type	In-line, Water-cooled, Four-stroke, 6-cylinder
Engine Power (kW)	169
Rated Speed (r/min)	2200
Emission Standard	China Stage II
Maximum Torque (N·m)/Speed (r/min)	900/1600

Service Capacities		ZF 6WG200   Hangchi 6WG180
Fuel (L)		270
Hydraulic Oil (L)		127   88
Transmission Oil (L)		28
Engine oil (L)		26   25
Antifreeze (L)		30   28

Standard Configuration	
FAW BFM8-22T2	
ZF 6WG200   Hangchi 6WG180	
SDLG AG12D-7	
Chain-driven Drum Brake with Dual-circuit   Single-circuit	
Tire: 17.5-25-16PR-E-3/L-3	
Mechanical Control	
Rear Axle Drive	
ROPS CAB	
Air Conditioning	
Donaldson Air Filter	
Rotating Beacon	
Blade 14ft×22in	

Options	
Oil-bath Air Filter	
Wheel: 17.5-25-16PR-E-2/L-2	
17.5R25-1STTL-TB515-G-2	
17.5R25-1STTL-TB516-L-3	
17.5-25-16PRTL-TL568-L-4	
Wet Axle for ZF 6WG200 Model	
Blade 13ft×22in for ZF 6WG200 Model	
14ft Blade Widened Cutting Edge Module	
Medium Ripper	
Blade Floating Module	
Triple-Attachment Auxiliary Module	
Hydraulic Oil High-Temperature Environment Module	
Antifreeze Cold Environment Module	
Dozer Blade 8ft/9ft (W/W.O blade floating )/10ft	
Front Ripper	
Ripper Tooth (2 Pieces)	
Parallel Four-Bar Linkage Rear Ripper and Shipping Rack	
Working Device Five-Point Support Module	
Instructor Seat	
License Plate Light	
Rearview Camera	
TBOX Unit (Selected by Country)	
TBOX Unit (Wifi version) (Selected by Country)	

\*SDLG reserves the right to change specifications and materials at any time without prior notification. Features of the machine in photos may include additional equipment. If you need more information and available options, please contact your local distributor or SDLG.



### Shandong Lingong Construction Machinery Co., Ltd.

Add: Lingong Industry Park, Economic Development Zone, Linyi, Shandong, P. R. China

Tel: + 86-531-66590505 Fax: + 86-531-66590505 E-mail: export@sdlg.com Website: www.sdlg.com