



Reliability In Action

G9380H Motor Grader

Operating weight: 37100 kg

Length of Blade: 18 ft

Engine power: 268 kW



Hydrostatic Transmission

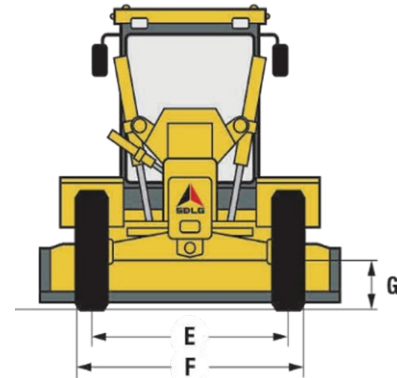
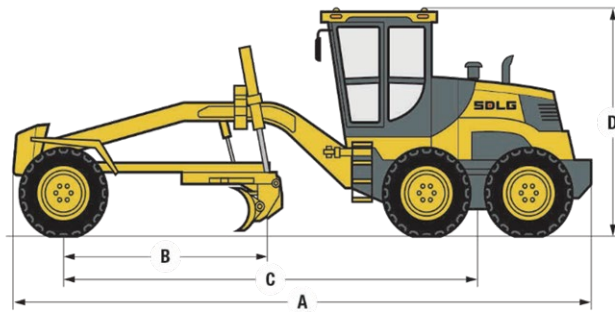
Reliable & Efficient

Energy-saving & Comfortable

Safe & Convenient

G9380H

Main specifications



Dimensions		Overall Machine Parameters		Standard Configuration	
A Overall length(mm)	11190	Operating weight(kg)	37100	Weichai WP13	
C Wheel base(mm)	7795	Over front wheels(kg)	11500	DANA Transmission	
D Overall height(mm)	3867	Over rear wheels(kg)	25600	NAF Axle	
E Width - front axle centre lines(mm)	2832	Maximum Inclination Angle of Front Wheel (°)	±18	Chain-driven drum braking, dual-circuit	
F Width - outside tyres(mm)	3450	Maximum Swing Angle of Front Axle (°)	±16	Fully Electronically Controlled, Variable Displacement System	
G Front axle ground clearance(mm)	648	Maximum Steering Angle of Front Wheel (°)	±45	FOPS&ROPS	
Engine		Frame Articulated Steering Angle (°)	±21	Rotating beacon	
Model	X12S3A360	Disk Diameter (mm)	1750	Blade 18ft*27in	
Type	Inline, water-cooled, four-stroke, electronic injection	Blade Dimensions (mm)	5486×776×32	Options	
Engine Power (kW)	268	Blade Rotation Angle (°)	360	Inclined bracket brass wear plate module	
Rated Speed (r/min)	2100	Blade Lifting Height (mm)	420	Hydraulic oil high-temperature environment module	
Emission Standard	GB 20891-2014 China III emission	Blade Cutting Depth (mm)	520	Hydraulic oil and antifreeze cold environment module	
Maximum Torque (N·m)/Speed (r/min)	1960/1400	Blade Cutting Angle (Forward/Backward)	64	Parallel four-bar linkage rear ripper	
Transmission System		Blade Inclination Angle (°)	65	TBOX unit (selected according to the country)	
Transmission	I-8000	Maximum Traction Force (μ = 0.75) (kN)	188	TBOX unit WIFI version (selected according to the country)	
Transmission Model	Counter-shaft electric liquid shift	Maximum Forward/Reverse Speed (km/h)	46.5	Oil-bath air filter	
Gears	-				
Service Capacities					
Fuel (L)	400+520				
Hydraulic Oil (L)	167				
Transmission Oil (L)	70				
Engine oil (L)	34				
Antifreeze (L)	50				

*SDLG reserves the right to change specifications and materials at any time without prior notification. Features of the machine in photos may include additional equipment. If you need more information and available options, please contact your local distributor or SDLG.



Shandong Lingong Construction Machinery Co., Ltd.

Add: Lingong Industry Park, Economic Development Zone, Linyi, Shandong, P. R. China

Tel: + 86-531-66590505 Fax: + 86-531-66590505 E-mail: export@sdlg.com Website: www.sdlg.com