



Reliability In Action

E6550H

Hydraulic Excavator

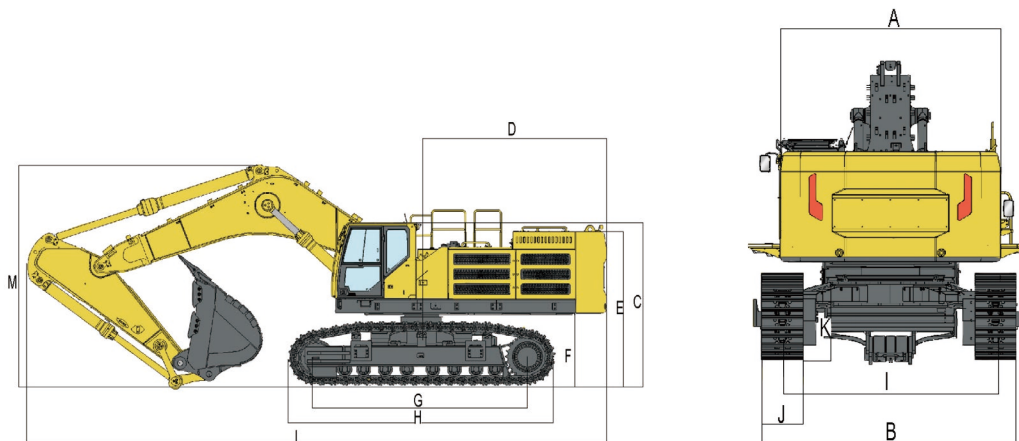
Operating Weight: 54000kg

Bucket Capacity: 3.6m³

Engine Power: 340kW



Main Parameter



Item	Specifications
Overall dimensions	
Overall width of upper assembly(A)	3235mm
Overall width(W)	3565mm
Overall height(H)	3625mm
Tail swing radius(B)	4015mm
Ground clearance of counterweight(D)	1300mm
Wheelbase(E)	4420mm
Track gauge(G)	2740mm
Track width(H)	600mm
Min. ground clearance(I)	527mm
Overall length(L)	12430mm
Overall height of boom(J)	3625mm

Overall parameters	
Bucket capacity	3.6m ³
Overall operating weight	54000kg
Max. excavation force	288kN
Slew speed	9.3r/min
Max. digging radius	11785mm
Max. digging depth	7455mm
Max. digging height	10860mm
Max. dumping height	7100mm
Min. front slewing radius	5150mm

Item	Specifications
Engine	
Model	Cummins X12
Engine power	340kW
Displacement	11800ml
Emission standard	GB 20891-2007(China phase III)
Min.fuel-consume ratio	179g/kW.h
Max. torque/speed	1898Nm/1400r/min

Traveling/swing system	
Qty. of track rollers(single side)	2x2
Qty. of carrier rollers(single side)	2x9
Traveling brake type	Wet and disc type
Swing brake type	Wet and disc type

Hydraulic system	
Hydraulic control type	Fully Electric control system
Hydraulic system type	Double pump constant power positive flow control
Max. flow	428x2
Operating pressure	34.5/36.5MPa

Fill capacity	
Fuel	760L
Engine oil	34L
Hydraulic oil	tank 235L/system 550L
Antifreeze	70L
Traveling reducer	2x9L
Slewing reducer fuel amount	gear oil 2x5.3L/grease 2x1.1L

Standard equipment	
Cummins X12	
Full electro-hydraulic system	
Selectable of working conditions	
Four operating mode	
In-cab emergency stop switch	
Boom lightx2(LED)	
Rear camera	
A/C	
ROPS cabin	
8-inch touchscreen instrumentation	
600mm track plate	
2 Dual-supported carrier roller	
2x9 bottom rollers	

Optional equipment	
Independent cooling of hydraulic oil	
Cab front work lightx4(LED)	
Rear work lights(cab)	
Boom lightx4(LED)	
Rear work lights(counterweight)	
Four-way camera	
Oil bath air filter	
Cab guards	
700/800/900mm track plate	
Rotating Warning Light	

*SDLG reserves the right to change specifications and materials at any time without prior notification. Features of the machine in photos may include additional equipment.If you need more information and available options, please contact your local distributor or SDLG.



Shandong Lingong Construction Machinery Co., Ltd.

Add: Lingong Industry Park, Economic Development Zone, Linyi, Shandong, P. R.China
Tel: 0086-531-66590505 Fax: 0086-531-66590505 E-mail: export@sdlg.com