



Reliability in Action



E6335H

Hydraulic Excavator

SDLG machines are built to be like the people that own them: hardworking, genuine and reliable. Cost effective, robust machines with fuel efficient engines that are easy to operate and easy to maintain. When you need parts or service, you can trust your dealership to deliver on the SDLG promise:
Reliability in Action



Congratulations to SDLG on winning the EFQM Global Excellence Award One of the world's top three quality awards

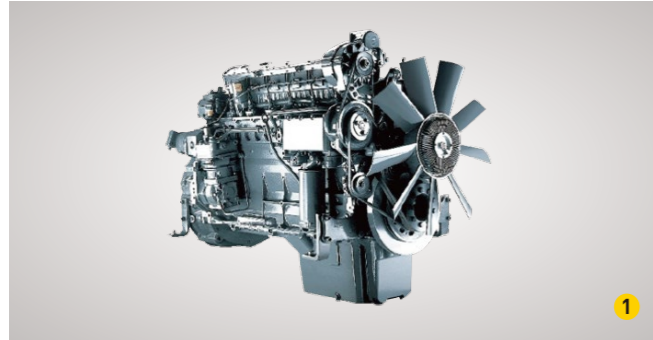


Shandong Lingong Construction Machinery Co., Ltd.
Add: Lingong Industry Park, Economic Development Zone, Linyi, Shandong, P. R. China
Tel: + 86-531-66590505 Fax: + 86-531-66590505 E-mail: export@sdlg.com Website: www.sdlg.com

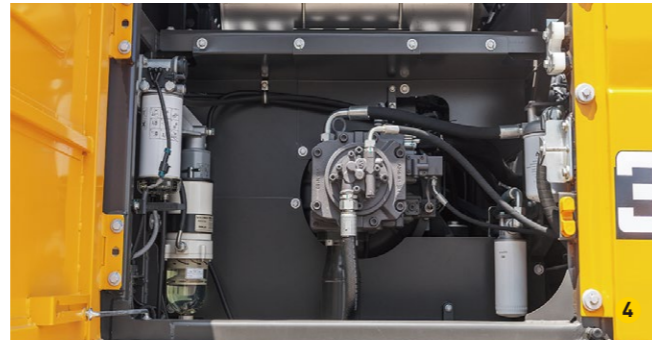


ENGINE

- 1 DDE BFM8 Tier 2 engine with Deutz technology
- 3 Fuel consumption is as low as common rail type but fuel quality tolerance is as good as mechanical injection pump.

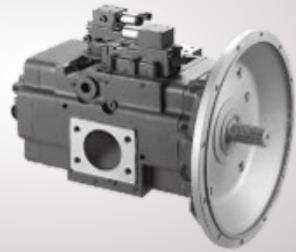


- 2 Electronic unit pump as injector
- 4 3-stage fuel filters as default



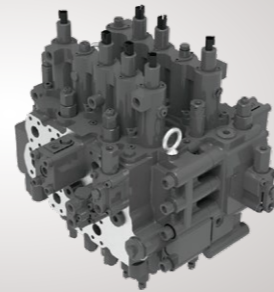
PUMP

Hengli Main pump



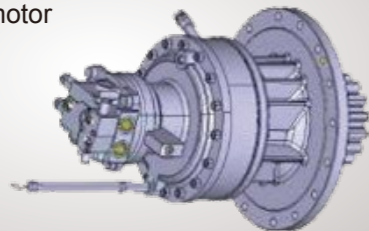
VALVE

Hengli main control valve



SWING MOTOR

Hengli swing motor



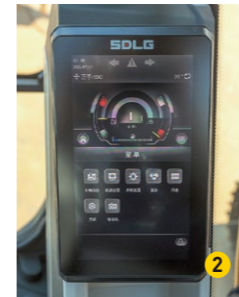
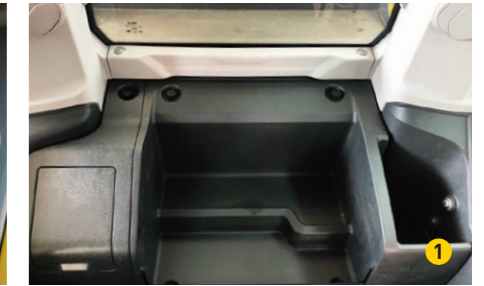
DRIVING MOTOR

Eddie driving motor



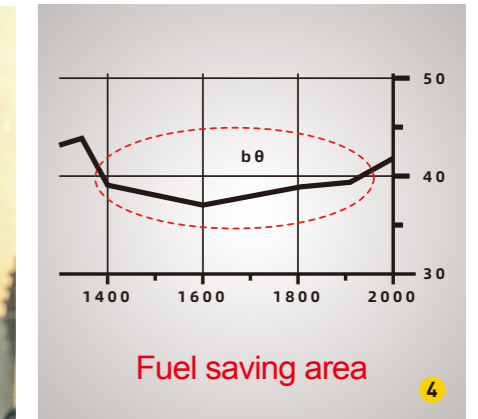
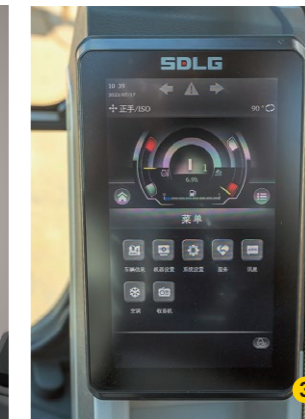
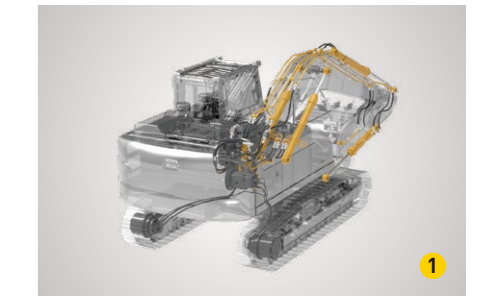
CABIN

- 1 New generation H series excavator with new generation cabin
- 2 8-inch LCD screen
- 3 ROPS cabin
- 4 Air suspension seat



ELECTRICAL CONTROL SYSTEM

- 1 Electric-Hydraulic control system
- 2 Intelligence control mode
- 3 Remote failure shoot and software OTA(with T-box)
- 4 High efficiency , low fuel consumption



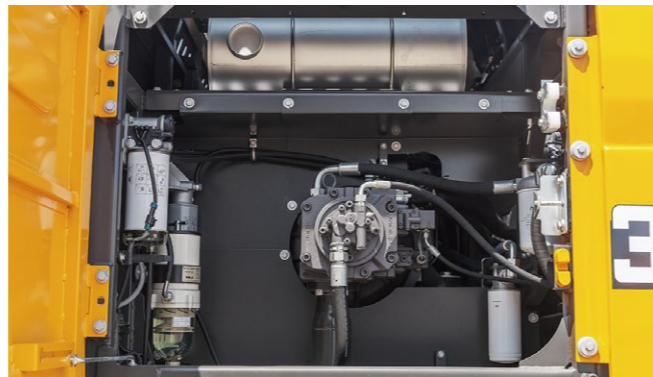
LARGE RADIATOR

Specially enlarged radiators, area is 38% larger than competitor



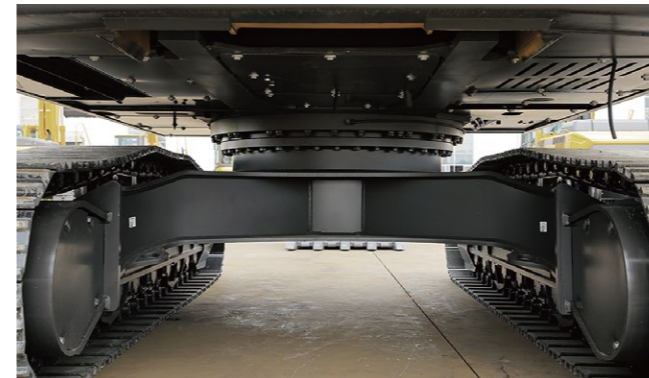
EASY MAINTENANCE

All filters fit in same



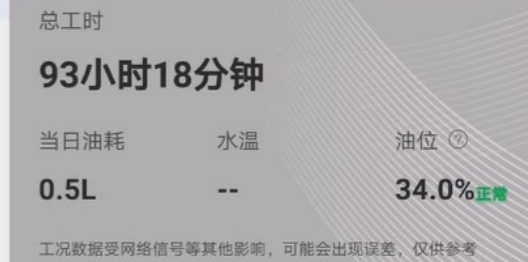
BOTTOM PROTECTION

Bottom protection for upper frame



INTELLIGENT MANAGEMENT

T-box



WORKING LIGHTS

There are 5 working lights



BUCKET

Tiger tooth diamond wear-resistant bucket teeth for longer lifespan



BOOM & ARM

6.5m Standard boom and 3.2m. When excavating raw coal and soil, the bucket has a greater excavation force, reaching a maximum of 223KN

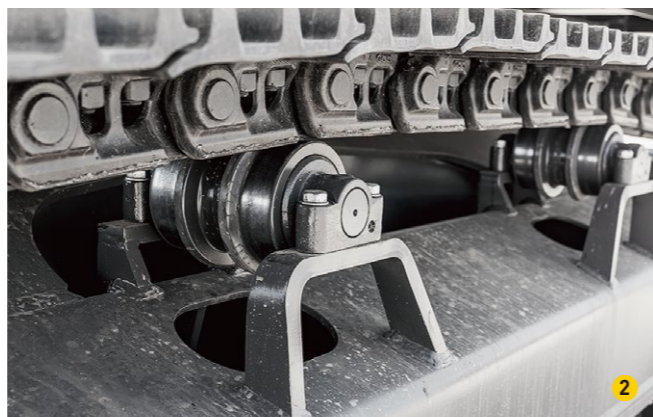


UNDERCARRIAGE

1 Double support for track rollers

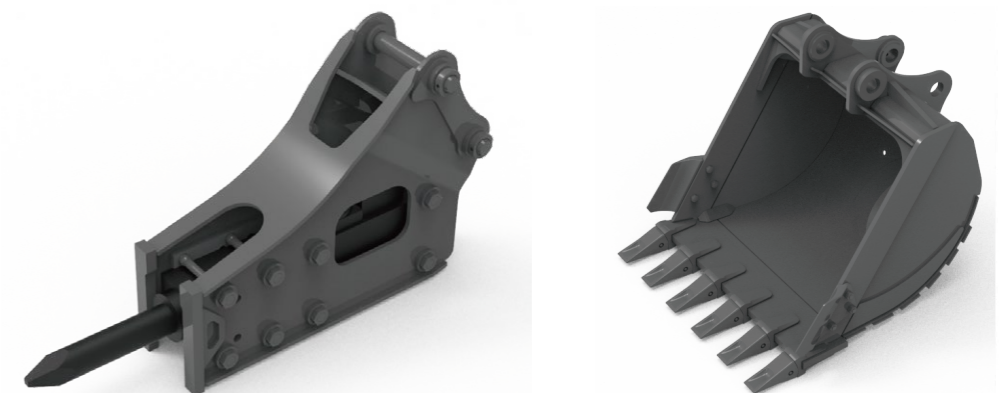


2 9 carrier rollers on one side



OPTIONS

Three guarding grids
Breaker
Different buckets to equip



E6335H

Hydraulic Excavator

ENGINE

	Unit	E6335H
Model	-	BFM8-29T2
Type	-	Four-stroke, supercharged, inter-cooled
Rated power	kW@rpm	215@1800
Max. torque	Nm@rpm	1255/1350
Displacement	ml	7800
No. of cylinders	-	6
Cylinder bore x stroke	Φ×mm	110×136
Emission	-	GB 20891-2007

HYDRAULIC SYSTEM

	Unit	E6335H
Hydraulic system type	-	Full electronic control positive flow
Main pumps	-	-
Max flow rate	L/min	2×290+25.5
Relief valve setting		
Implement circuit	bar	34.3/37MPa
Travel circuit	bar	34.3MPa
Swing circuit	bar	26MPa
Pilot circuit	bar	3.9MPa

ELECTRICAL SYSTEM

	Unit	E6335H
System voltage	V	24
Battery voltage	V	24
Battery capacity	Ah	200
Alternator voltage	V	28
Starter voltage	V	24

SERVICE REFILL CAPACITY

	Unit	E6335H
Fuel tank	L	590
Engine coolant	L	44
Engine oil	L	28
Swing drive	L	10.5
Travel drive	L	2×9.5
Hydraulic tank	L	195
Hydraulic system	L	480

DRIVE AND BRAKES

	Unit	E6335H
Max drawbar pull	kN	235.3
Max travel speed (low/high)	km/h	3.0/5.0
Service/parking brakes	-	Wet and disc type
Gradeability	°	35

SWING SYSTEM

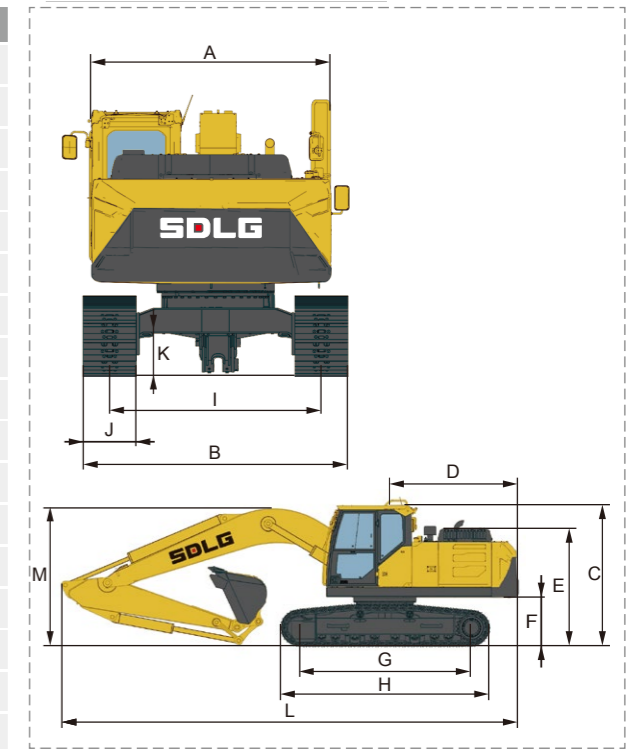
	Unit	E6335H
Swing brake	-	Wet and disc type
Swing speed	r/min	10.7

UNDER CARRIAGE

	Unit	E6335H
No. of track shoes	-	2×49
No. of top rollers	-	2×2
No. of bottom rollers	-	2×9
No. of track guards	-	2×2

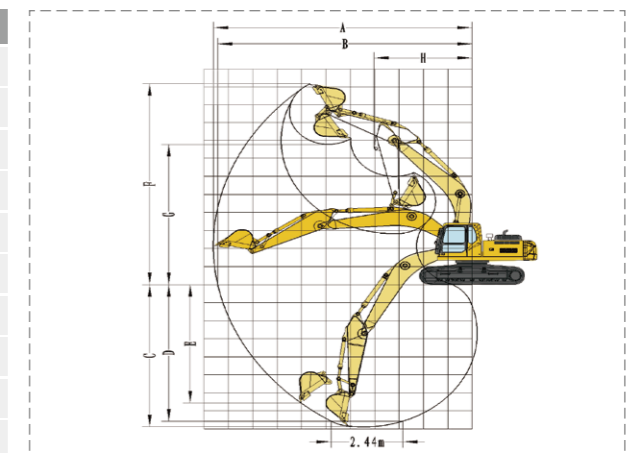
DIMENSIONS

	Unit	E6335H
Boom length	mm	6200
Arm length	mm	3200
A Overall width of upper assembly	mm	2950
B Overall width	mm	3190
C Overall height	mm	3450
D Tail swing radius	mm	3530
E Overall height of engine hood	mm	2885
F Counterweight clearance	mm	1215
G Wheel base	mm	4130
H Track length	mm	5070
I Track gauge	mm	2590
J Shoe width	mm	600
K Min. ground clearance	mm	520
L Overall length	mm	11000
M Overall height of boom	mm	3450
Bucket capacity	m³	1.9
Operating weight	kg	34800



EXCAVATING RANGE

	Unit	E6335H
A Max. digging reach	mm	10860
B Max. digging reach on ground	mm	10650
C Max. digging depth	mm	7220
D Max. digging depth (horizontal 2.5 m)	mm	7025
E Max. vertical wall digging depth	mm	5420
F Max. cutting height	mm	10045
G Max. dumping height	mm	7090
H Min. front swing radius	mm	4180
Max. excavating force of bucket (ISO)	kN	223
Max. excavating force of arm (ISO)	kN	171



* The right of final interpretation of the abovementioned parameters shall be reserved by SDLG. No further notice will be given in case of any change. Illustrations in the text may not always be the standard illustrations for this model.

ATTACHMENTS

Bucket	Model	Capacity/m³	Width/mm	Weight/kg	Number of teeth/side cutters
	E6335H	1.65	1500	1869.91	5
		1.9	1680	2002.16	5
		1.9	1670	1567.8	5

Breaker	Model	Diameter/mm	Weight/kg	Pressure/bar	Frequency/bpm
	E6335H	165	3280	170-200	250-380

* The right of final interpretation of the abovementioned parameters shall be reserved by SDLG. No further notice will be given in case of any change. Illustrations in the text may not always be the standard illustrations for this model.