

E7210H Product Presentation

Justin song

Training support, OPSM

2024/12/10



CONTENTS

目录

01

Product Overview

02

Product Advantages

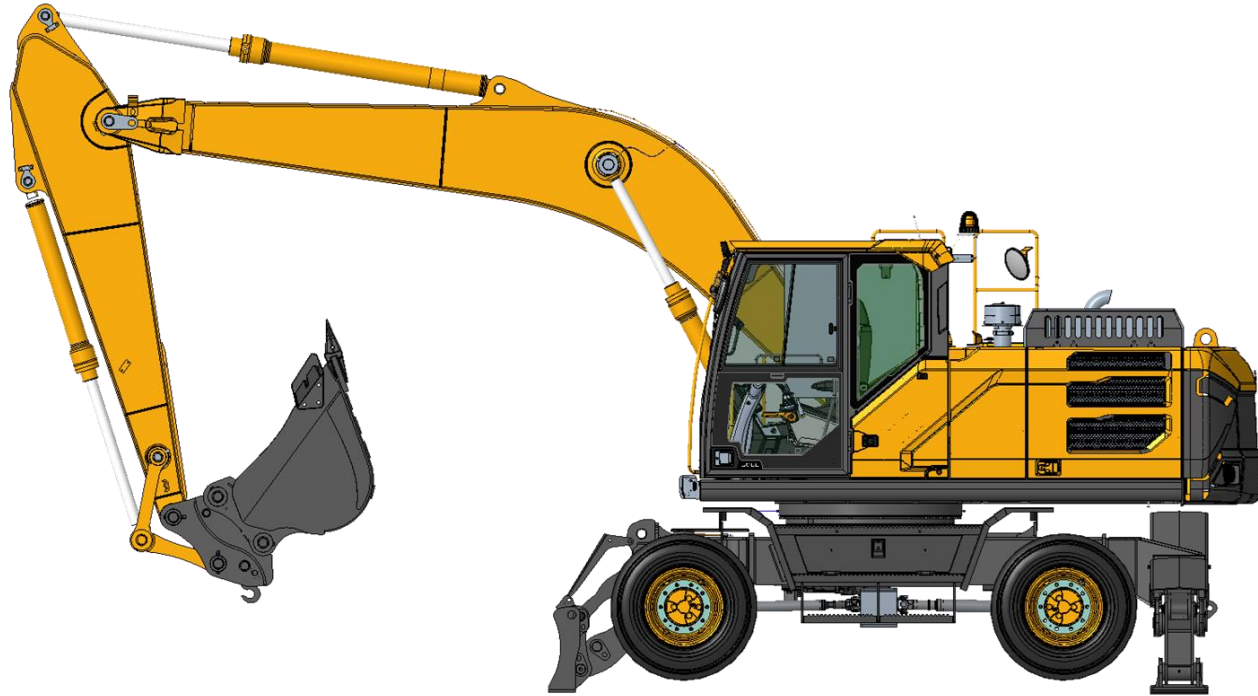
03

Optional Module

04

Product Comparison

Product Overview

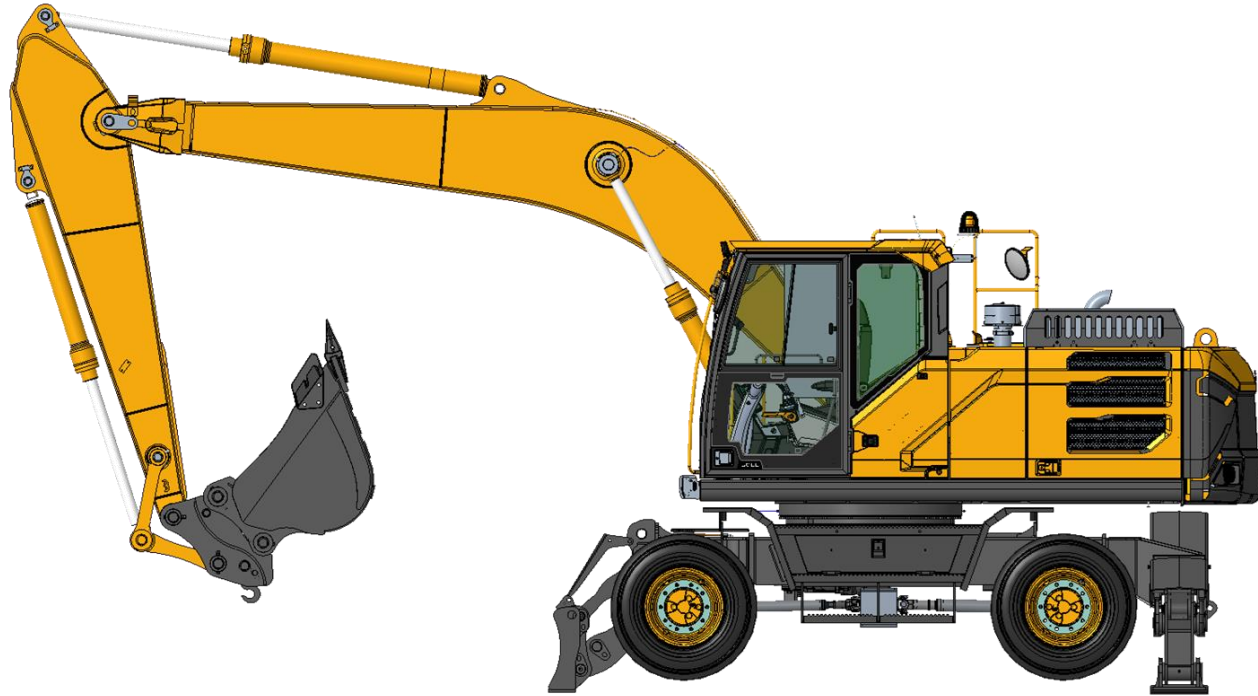


E7210H is a one new comprehensive wheeled excavator launched by SDLG, it adopts new H series appearance, with durable power system, good fuel adaptability; Equipped with high efficient electronic control hydraulic system, has quick action response, flexible compound action, high efficiency; High-end H series cab, smooth operation, comfortable driving, which makes it in clearing, gravel, urban construction and other comprehensive operating conditions have very excellent performance.



Reliability In Action
可靠承载重托

Product Overview- development



E7210H

- ① Front dozer and rear support leg
- ② X1/X3 pipeline
- ③ Hydraulic quick coupler
- ④ rear lamps

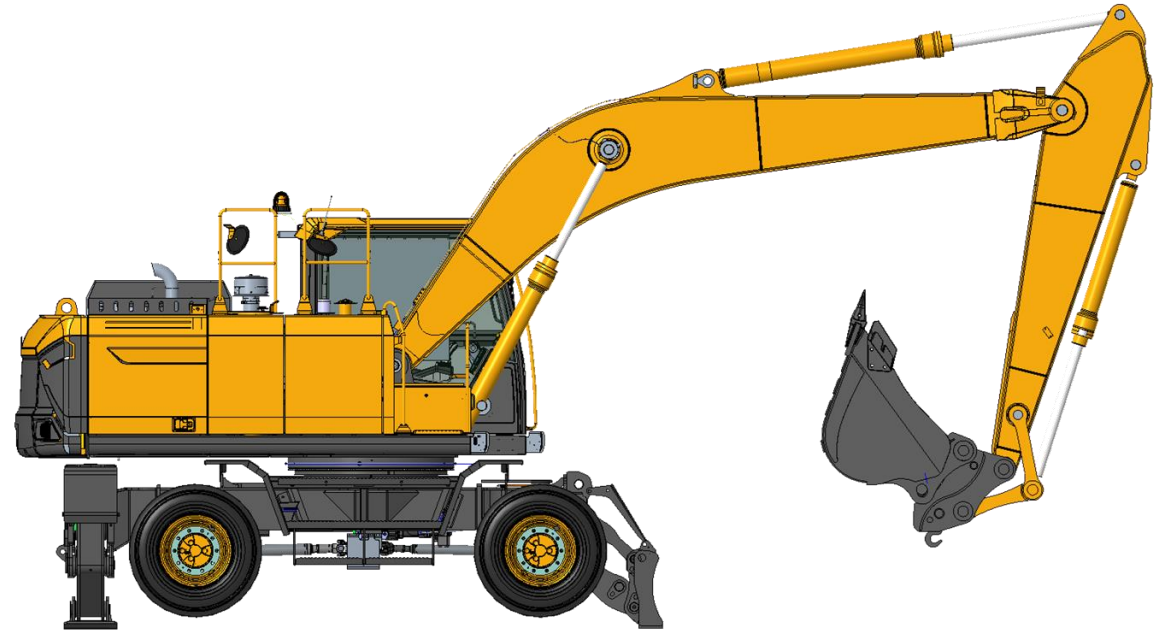
Product Overview-main configuration

Model/configuration	E7210H
Indent No.	E210HJ2468K36E0
Operating weight	22400kg
Power	DDE BF6M2012-T2/123kw
Working device	Standard boom, arm
Hydraulic system	Double pump constant power electro-hydraulic control
Main pump	Hengli V90N137
MCV	Hengli HVME300
Swing motor	Hengli HM5X130
Travel motor	Rexroth A6VM160HA1
Transmission	ZF 2HL290
Axles	ZF MS-E 3070/MT-E 3070
Bucket	GP 0.95×1165
Tyre	10.00R20 18PR



Product Overview-main parameter

Model/Parameter	E7210H
Overall size (mm)	9700×2510×3420
Swing speed (r/min)	11
Travel speed (L/H) (km/h)	10/36.5
Max. digging force (KN)	112.2
Boom length (mm)	5700
Arm length (mm)	2900
Wheelbase (mm)	1914
Max. digging radius (mm)	2750
Max. digging depth (mm)	10275
Max. dumping height (mm)	6800
Tail turning radius (mm)	6570
Boom cylinder diameter(mm)	2830
Arm cylinder diameter(mm)	380
Bucket cylinder diameter(mm)	380



CONTENTS

目录

01

Product Overview

02

Product Advantages

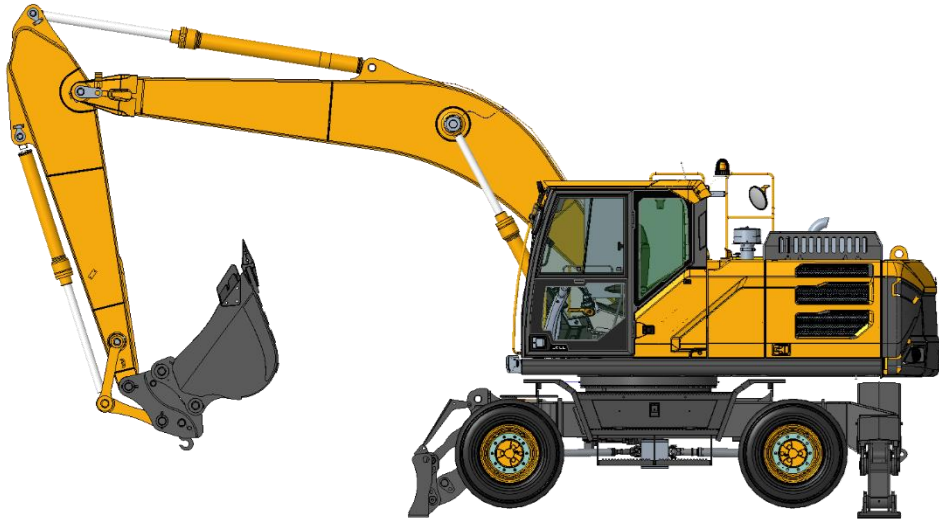
03

Optional Module

04

Product Comparison

Product Advantages



➤ **Better adaptability, energy efficient**

123kw DDE single unit pump 6 cylinder engine, good fuel adaptability, efficient hydraulic system, provide high productivity

➤ **High-end configuration, reliable and durable**

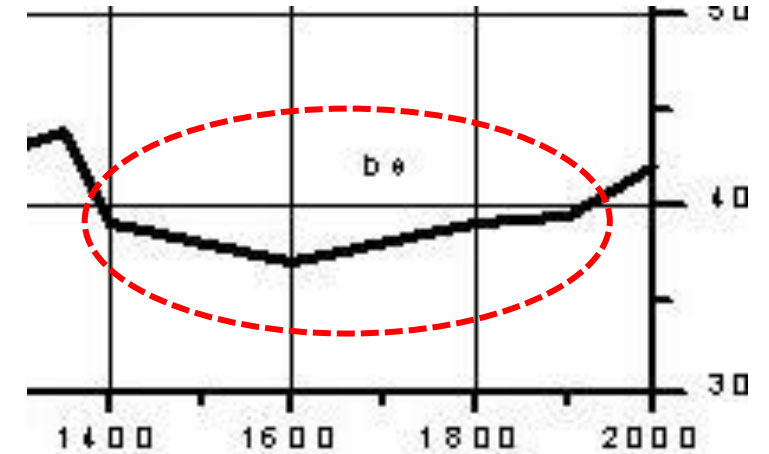
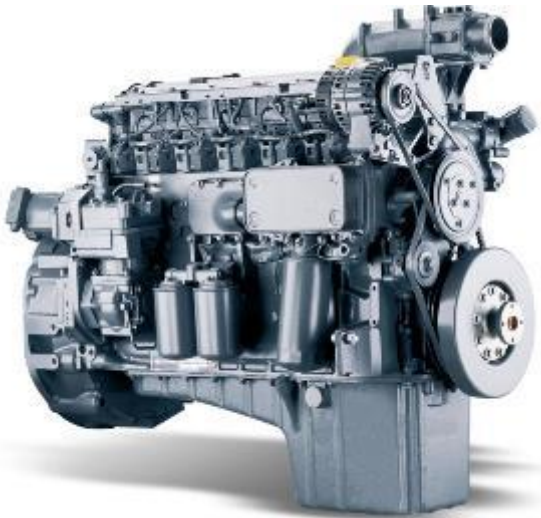
Electro-hydraulic control positive flow hydraulic system, core components good quality rigid structural parts, legs choose, X1/X3/QC pipeline

➤ **Safe and comfortable, convenient maintenance**

Open view comfortable cab, mechanical suspension seat, flexible operation, centralized arranged filters

➤ Product Advantages-Better adaptability, energy efficient

DDE BF6M2012



Fuel consumption curve

- High engine production efficiency; Carefully adjusted engine performance curve, not only meet the high speed segment efficiency demand, but also make the economic speed zone of low fuel consumption demand ;
- The EECU controls the fuel supply throughout the whole process, and realizes the optimal match with the main pump according to the load situation in real time, reducing fuel consumption.

➤ Product Advantages-Better adaptability, energy efficient

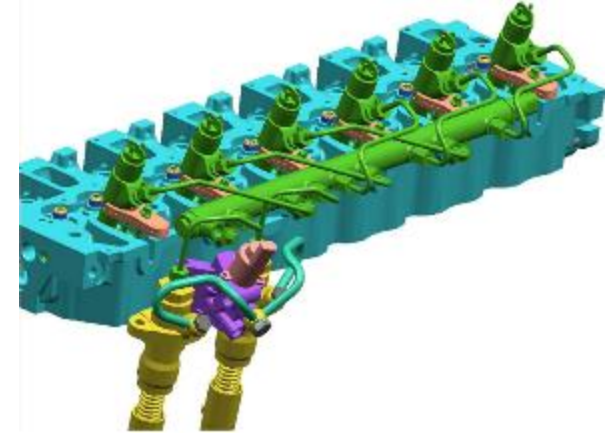
DDE BF6M2012



6X



VS



- Adopts electrical unit pump structure for fuel supply, compare with high pressure common rail engine, it has better adaptability and make the engine has long lifetime and lower failure rate;
- Unit pump also can supply high injection pressure for fully fuel combustion and with strong power;
- Unit pump has lower service cost compare with high common rail engine.

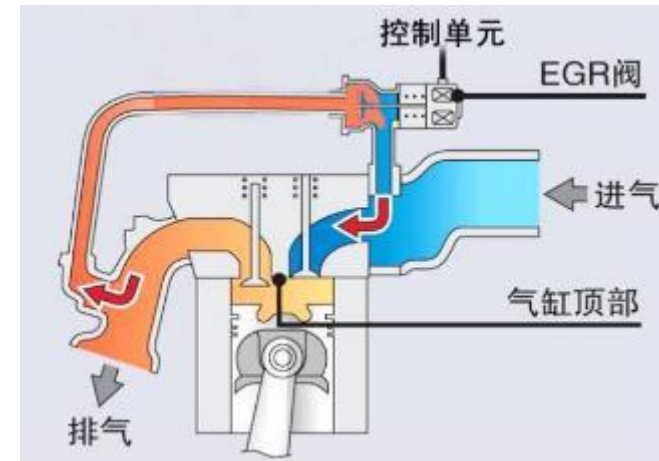
Product Advantages-Better adaptability, energy efficient

DDE BF6M2012

BF4M1013-T2 emission



BF6M2012-T3 emission



For areas without emission requirements, DDE T2 engine configuration without EGR can ensure the effective power of the engine and make the engine more powerful, while reducing the production cost and maintenance cost.

Product Advantages-Better adaptability, energy efficient

Engine rpm mode

Select working mode according to working condition for high fuel efficiency

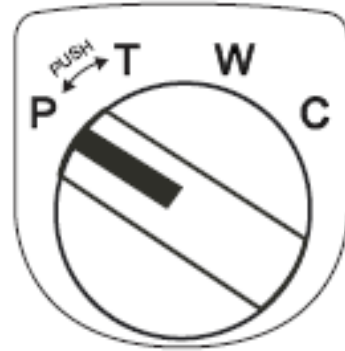


H10
S9
S8
S7
S6
S5
F4
I2
I1

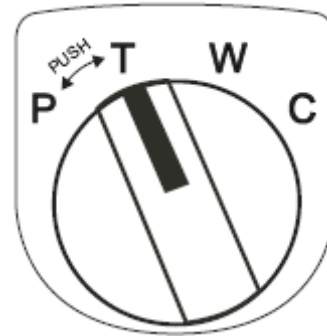
9 rpm modes for customer to select, to lower fuel consumption and improved productivity

Product Advantages-Better adaptability, energy efficient

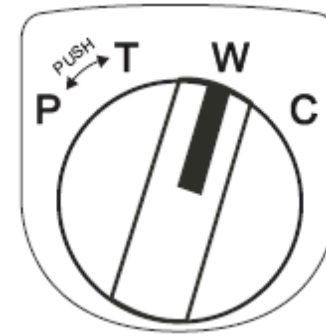
Working mode



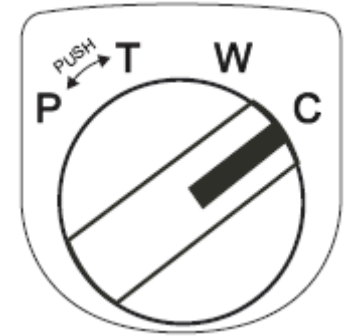
Parking mode:
can not travel
and work。



Travel mode:
can travel,
can not work



work/travel
mode: can
travel and work



Creep mode: can
travel and work,
lowest travel
speed, max
traction force

Wheeled excavator has four working mode, for different condition, T mode for transition, W mode for material loading at different place, C mode for fine work. That's make E7210H more adapt to different kind of work.

➤ Product Advantages-Better adaptability, energy efficient

Auto idle speed

Auto idle speed






Auto idle speed function can be selected on IECU, engine will automatically back to idle speed if the lever does not being operated after 5s, the time can also be adjusted. This function for lower the fuel consumption



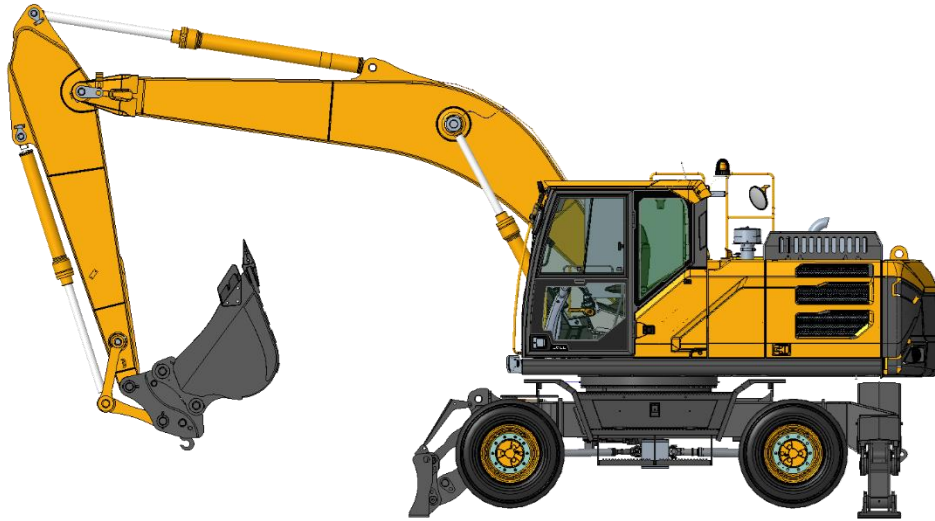
Put down the safety lock bar, the rpm will drop down to min. speed for decrease fuel consumption

Product Advantages-Better adaptability, energy efficient

Pressure boost

Pressure boost for high digging force		
One key boost	F mode	Travel only
		
Over load condition it can provide 9S pressure boost for bigger digging force	F mode with pressure boost automatically for lifting work	Only travel with pressure boost for large travel force

Product Advantages



➤ Better adaptability, energy efficient

123kw DDE single unit pump 6 cylinder engine, good fuel adaptability, efficient hydraulic system, provide high productivity

➤ High-end configuration, reliable and durable

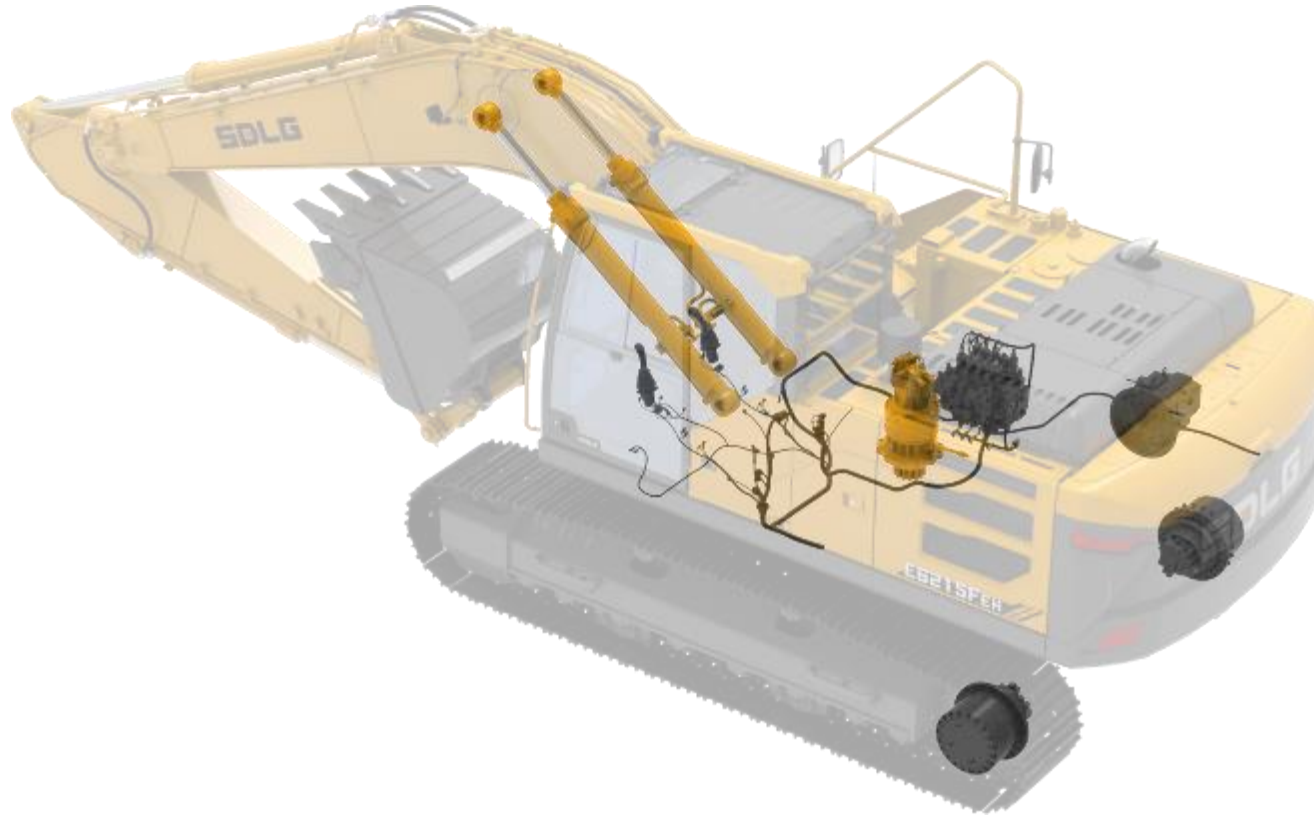
Electro-hydraulic control positive flow hydraulic system, core components good quality rigid structural parts, legs choose, X1/X3/QC pipeline

➤ Safe and comfortable, convenient maintenance

Open view comfortable cab, mechanical suspension seat, flexible operation, centralized arranged filters

➤ Product Advantages-High-end configuration, reliable and durable

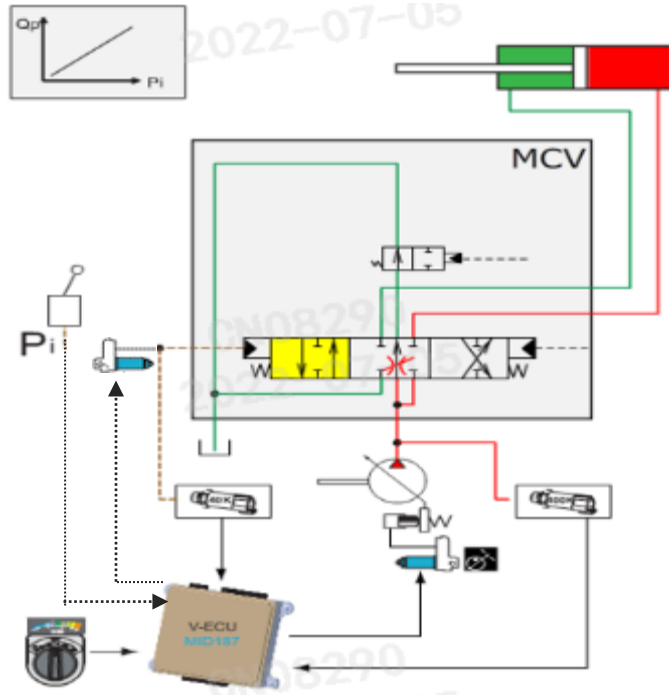
Full electronic control positive flow hydraulic system



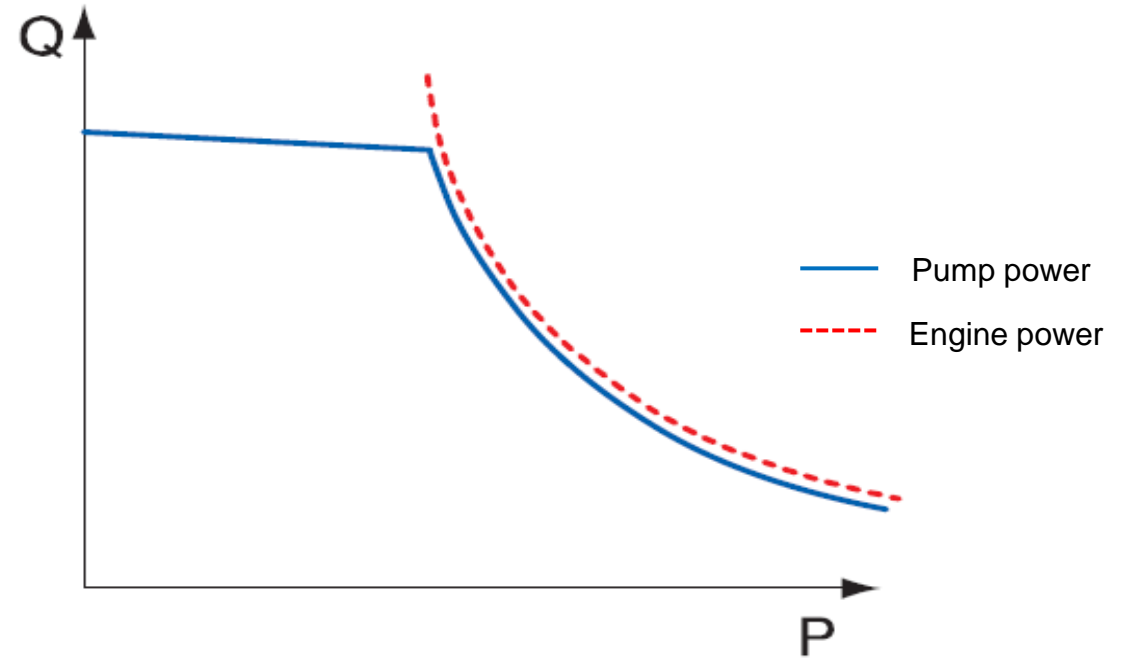
E7210H adopts advanced hydraulic system , make its working more efficient and energy saving than before

Product Advantages-High-end configuration, reliable and durable

Electro-hydraulic control positive flow system



Full electronic positive flow



Positive flow

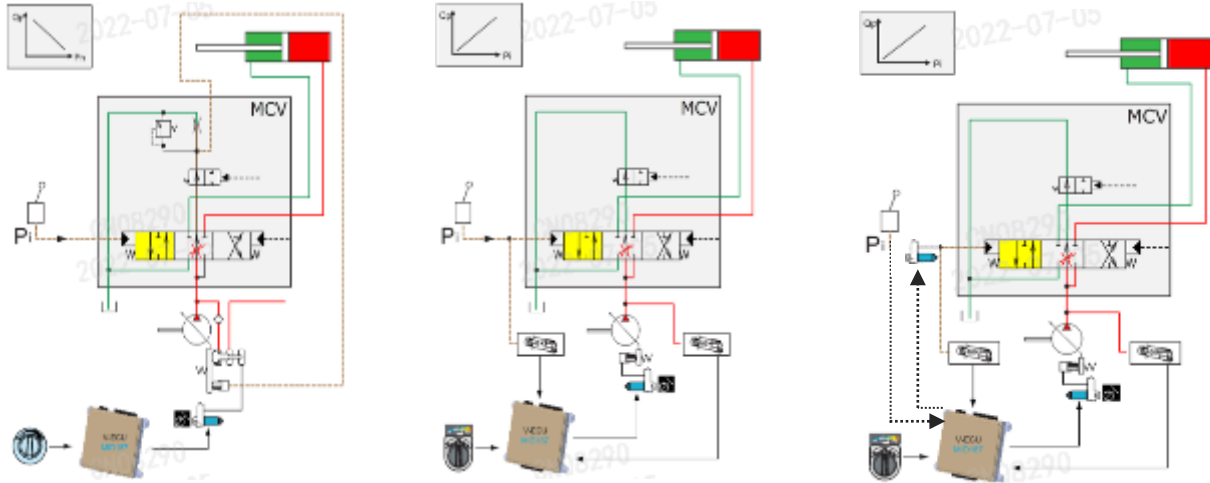
Adopts the most advanced hydraulic system, perfect power utilization rate, quick response speed, rich function can select.

Product Advantages-High-end configuration, reliable and durable

Electro-hydraulic control positive flow system

Quick action response

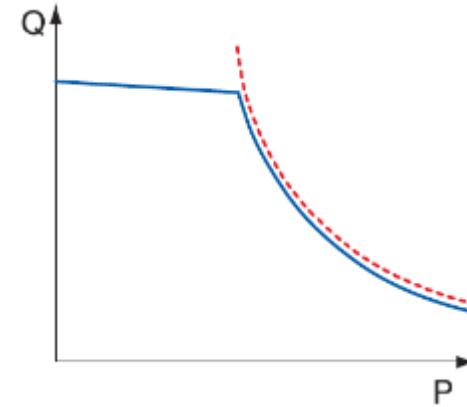
Energy saving



Negative flow

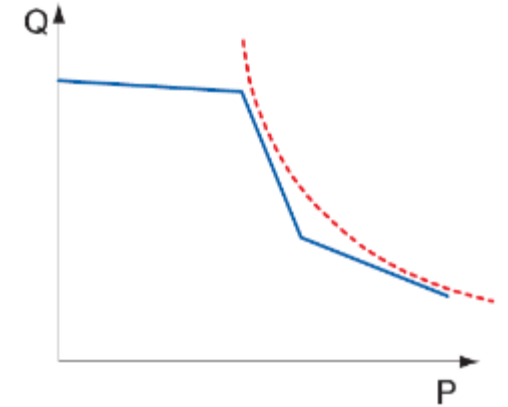
Positive flow

Full electronic positive flow



Positive flow

VS

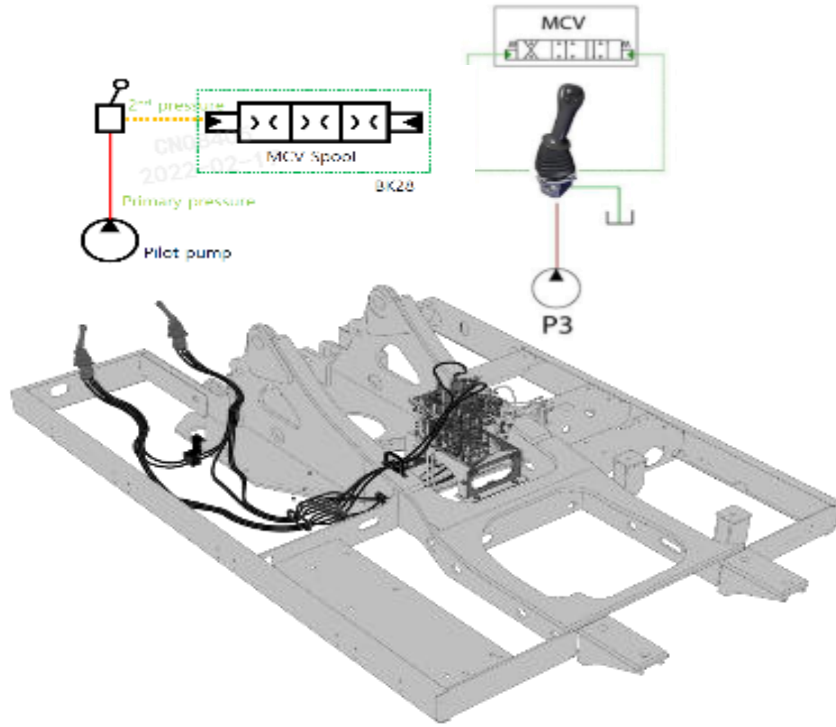


Negative flow

Compare to negative flow system, full electronic system has more quick action response, more flexible compound action and energy saving.

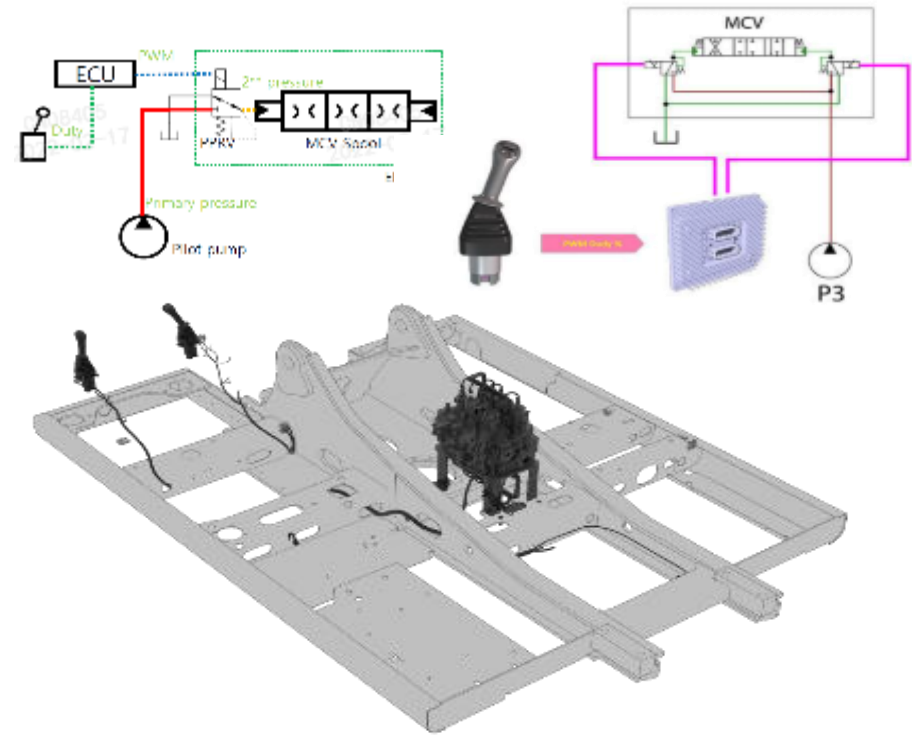
Product Advantages-High-end configuration, reliable and durable

Electro-hydraulic control positive flow system



Pilot control

VS



Electronic control

Product Advantages-High-end configuration, reliable and durable

Intelligent working mode

Three type control mode:
standard / smart / fine



Four type working mode: standard / leveling / efficient / lifting

Swing speed adjustment



Working mode

standard low platform leveling efficient mode lifting

SDLG Other brands

Swing speed adjustment (30°-90°)

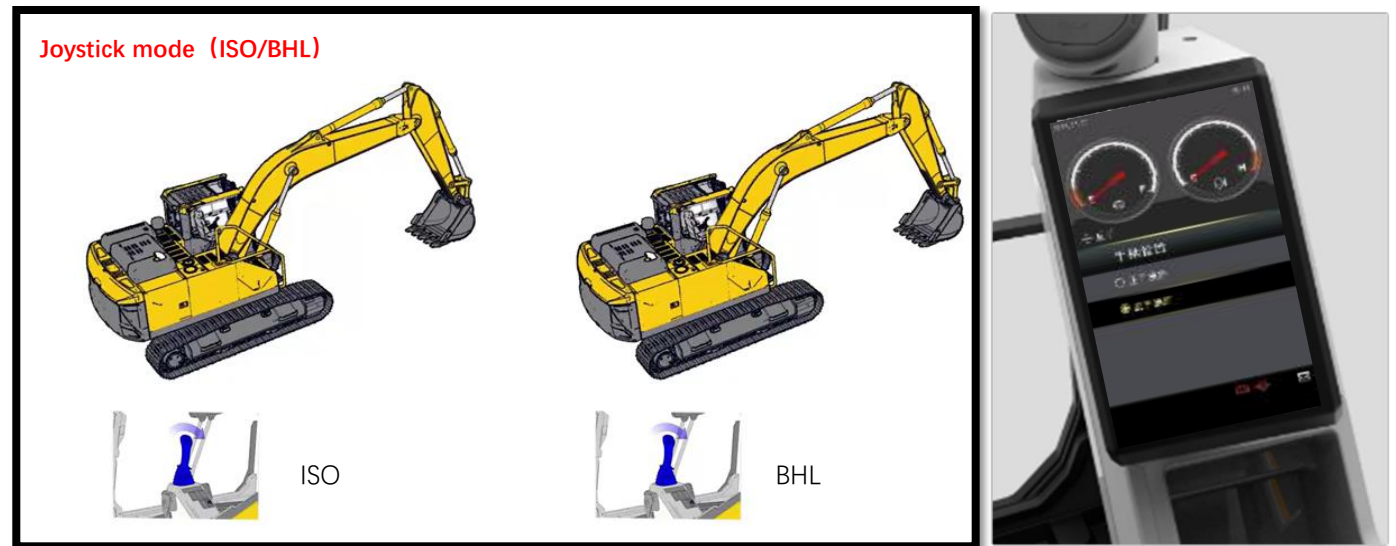
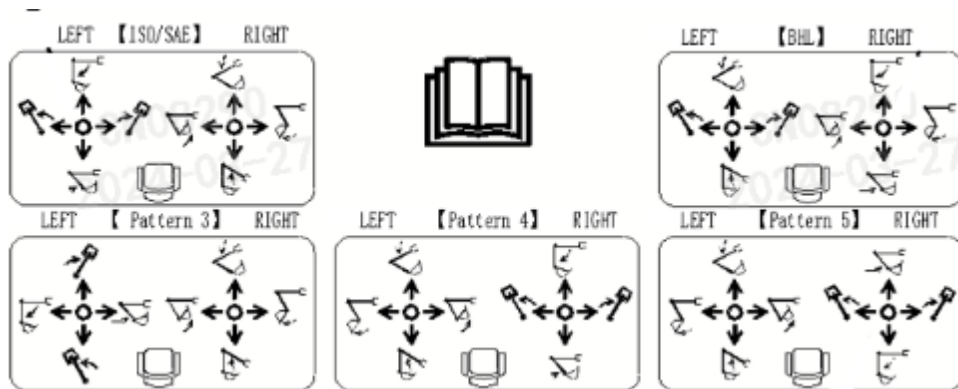
75° mode > 90° mode



Product Advantages-High-end configuration, reliable and durable

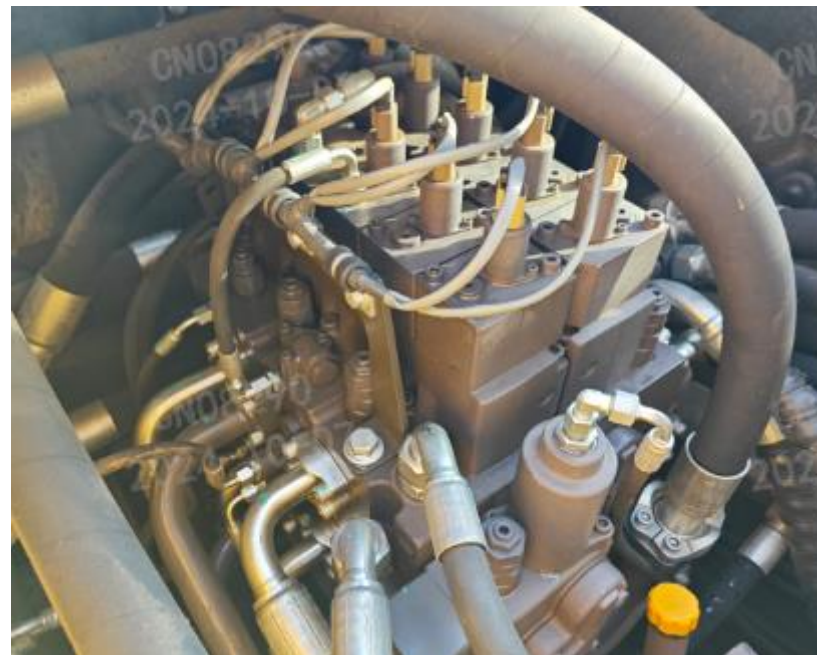
Intelligent working mode

Five joystick operation mode



➤ Product Advantages-High-end configuration, reliable and durable

Pump and MCV



Valve channel more larger than before allowed more oil flow with less pressure loss;

Boom arm all use double spools for confluence of double pump, more efficiency;

Bucket with regeneration function for energy saving and effectively;

With boom, arm , swing priority function for compound action, improved compound action speed and flexible.

Breaker confluence, high efficiency.

➤ Product Advantages-High-end configuration, reliable and durable

Hydraulic component

Famous brand with reliable quality

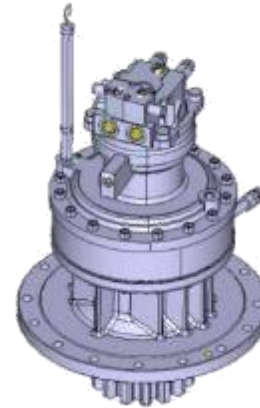
Hengli Pump



Hengli MCV



Hengli Swing motor



Rexroth Travel motor



Hengli and Eddie are the best hydraulic brands in China, and experience many year test in Chinese market, proven with reliable quality and long service time; Rexroth piston motor has large travel force and high transmission efficiency

➤ Product Advantages-High-end configuration, reliable and durable

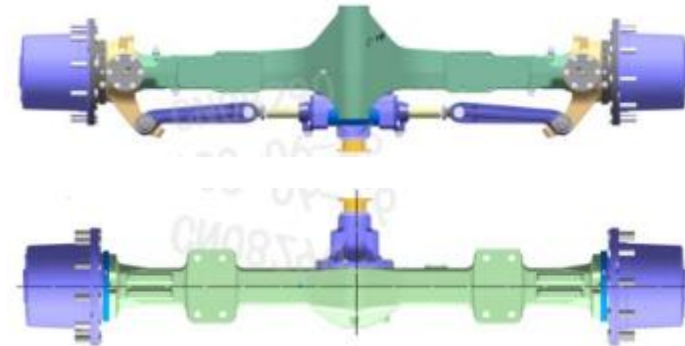
Transmission component

Famous brand, reliable component

ZF gearbox



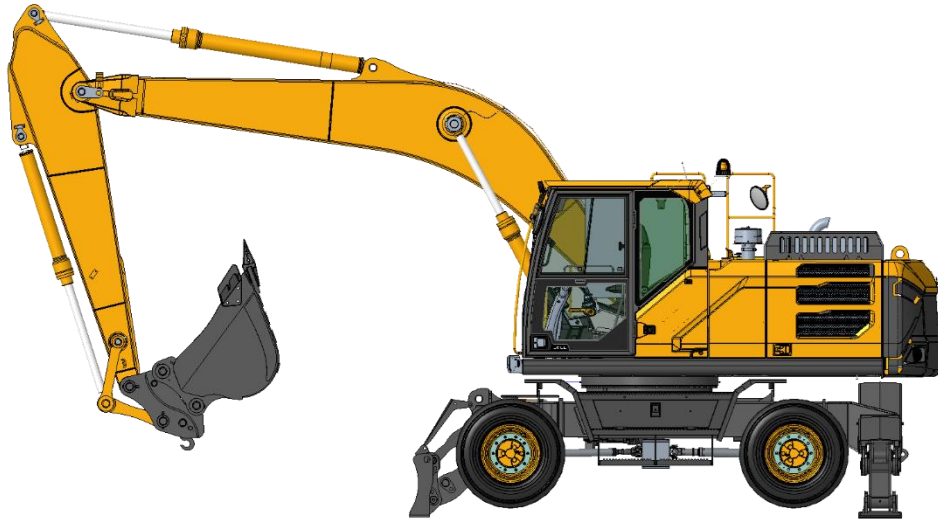
ZF wet brake axle



Transmission system use ZF gearbox and axles, which has long lifetime, gearbox has F2R2 gears, max. speed 37.5km/h for fast transition to different place, stepless speed change。

➤ Product Advantages-High-end configuration, reliable and durable

Working device



The boom and bucket rod are welded with high-strength tensile steel plate with high strength. After stress analysis, the stress parts are strengthened. The failure rate of temporary structural parts is far lower than that of competing products



Bucket rod end welding reinforcement, effective protection material bump



The bottom and side of the bucket easy to wear welding wear-resistant plate, prolong the life

➤ Product Advantages-High-end configuration, reliable and durable

Working device



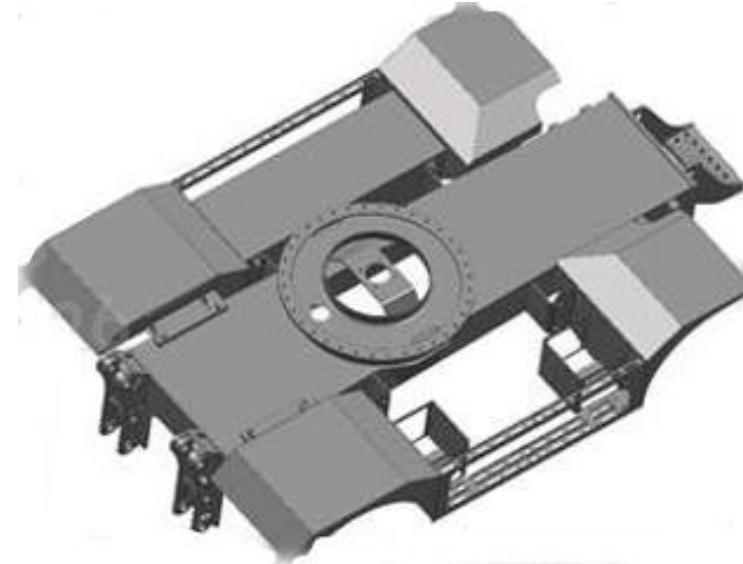
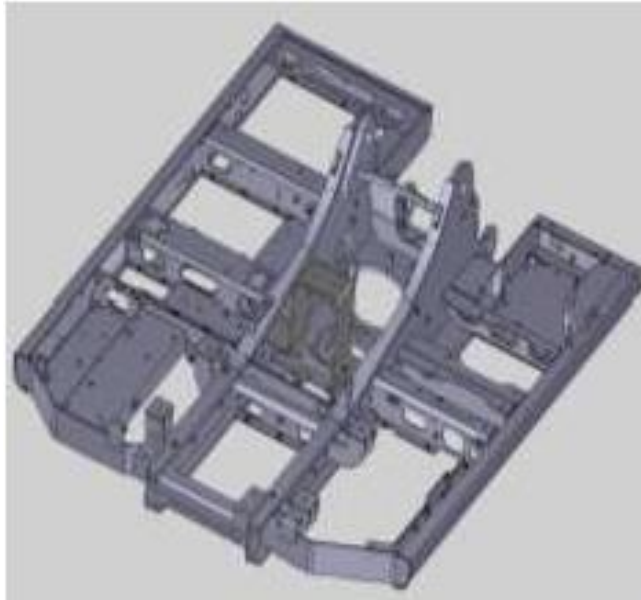
The working device adopts robot automatic welding, the weld is uniform, and the stress concentration is eliminated



The structural parts are inspected by welding seam to ensure delivery without defects

➤ Product Advantages-High-end configuration, reliable and durable

Frame



Stress analysis of the upper and lower frame, strengthening the design of the middle bearing parts, the frame bearing capacity is large; Weld reinforcing bars to the weak parts of the lower frame to improve reliability

Product Advantages-High-end configuration, reliable and durable

Chassis



E7210H with wide chassis for stable performance, with front dozer with rear legs, it has very strong structure, improve machine stability and comfort when digging material.

➤ Product Advantages-High-end configuration, reliable and durable

Axle shock absorber and lock



E7210H has double shock absorber cylinder one front axle to decrease vibration when traveling; and when lock the cylinder, it can improve stability when working ;
P mode, safety lock bar up, slow travel speed with breaking , the cylinder will lock automatically.

➤ Product Advantages-High-end configuration, reliable and durable

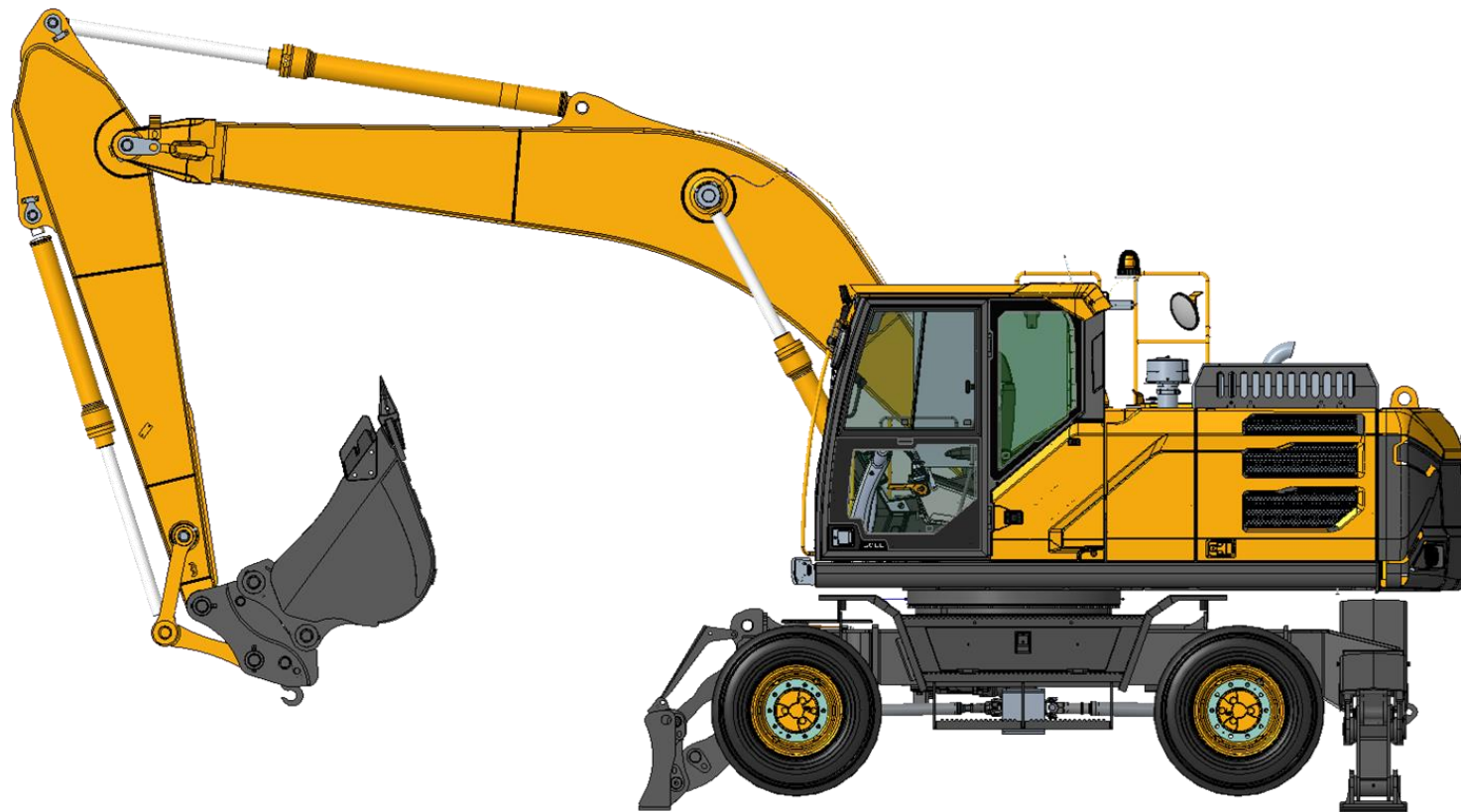
Double circuits wet brake system



E7210H service brake system use hydraulic wet brake system, double circuit to improve its reliability; wet brake has large break torque, short break distance, improve safety.

➤ Product Advantages-High-end configuration, reliable and durable

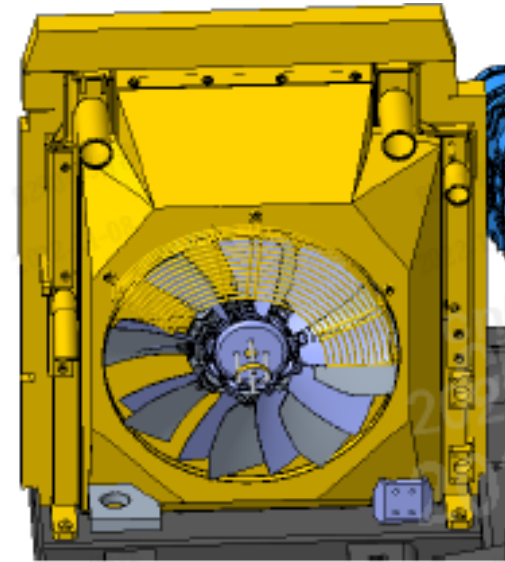
Tire



E7210H adopts 10.00R20-18PR radial tire, it has good anti-earing performance and long lifetime.

➤ Product Advantages-High-end configuration, reliable and durable

Heat dissipation



Large radiator and heat dissipation performance improved 35%, lower hydraulic balance temperature, less leakage happens, and when use hammer or shear even confluence mode, has better dissipation performance.

➤ Product Advantages-High-end configuration, reliable and durable

Electrical system



The electrical system adopts the electric system independently developed by the factory. ECU has the functions of self-check, monitoring, alarm, etc. to monitor the running state in real time. The communication between controllers through CAN bus has high reliability. Techtool can be used to detect and write all controllers, convenient maintenance

➤ Product Advantages-High-end configuration, reliable and durable

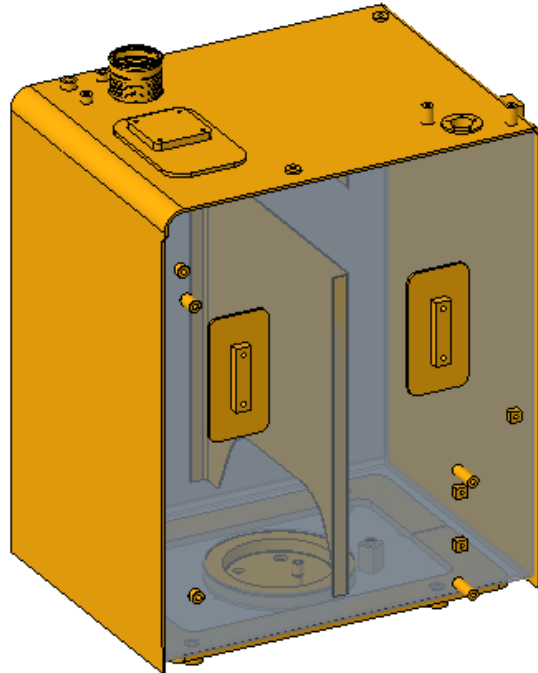
Three stage fuel filters



With three stage fuel filters, two stage fuel water separator filter to decrease the water in fuel and prolong the lifetime of engine

➤ Product Advantages-High-end configuration, reliable and durable

Fuel tank capacity
Cyclone pre-filter

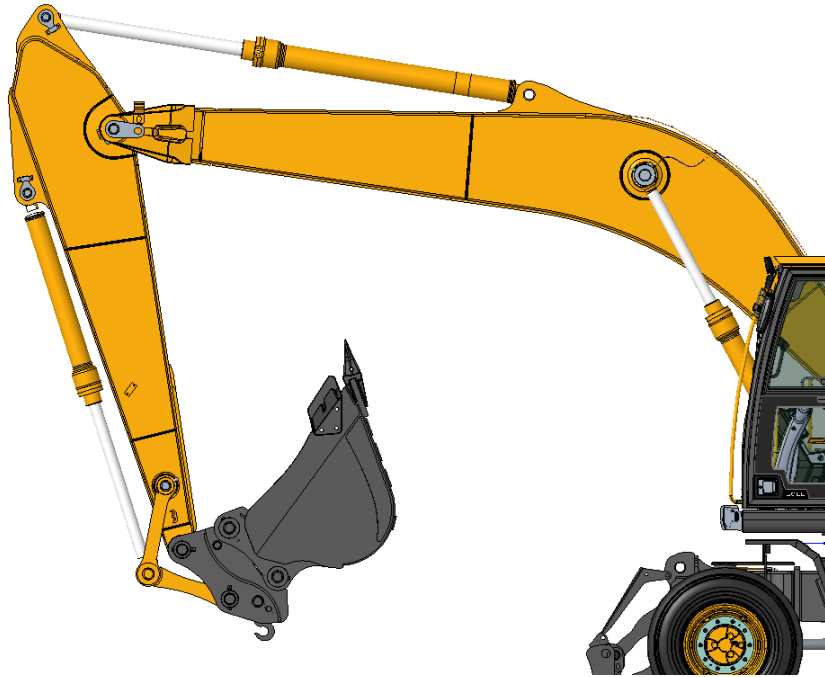


Fuel tank capacity 380L, longer continuous operation time, and there is reinforced plate inside tank, improved the reliability and decrease fuel fluctuation.

E7210H Use cyclone, eliminate the large foreign bodies and particles in the air, prolong lifetime of air filter and protect the engine effectively.

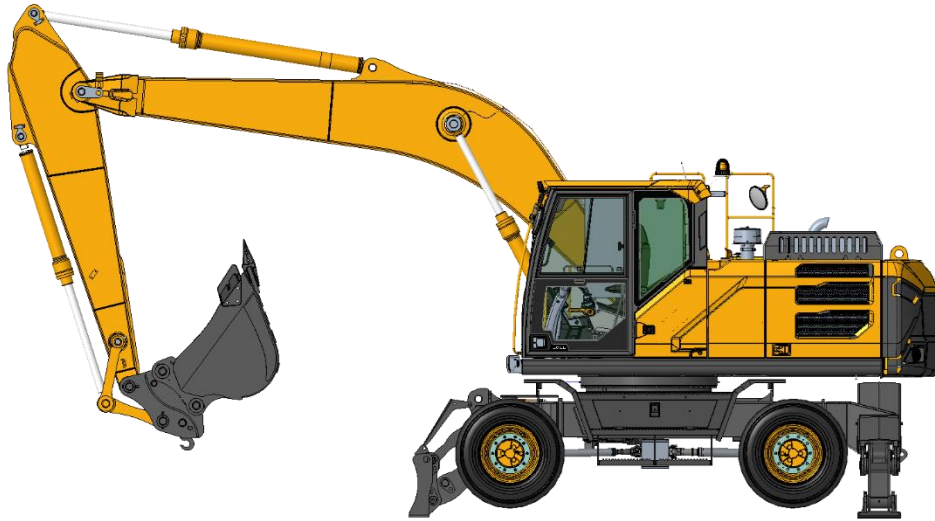
➤ Product Advantages-High-end configuration, reliable and durable

X1/X3, QC pipe and coupler



E7210H standard with X1/X3 pipeline and quick coupler, use multi-function pilot handle control hammer or shear and other attachment, so make it can install attachment quickly.

Product Advantages



➤ Better adaptability, energy efficient

123kw DDE single unit pump 6 cylinder engine, good fuel adaptability, efficient hydraulic system, provide high productivity

➤ High-end configuration, reliable and durable

Electro-hydraulic control positive flow hydraulic system, core components good quality rigid structural parts, legs choose, X1/X3/QC pipeline

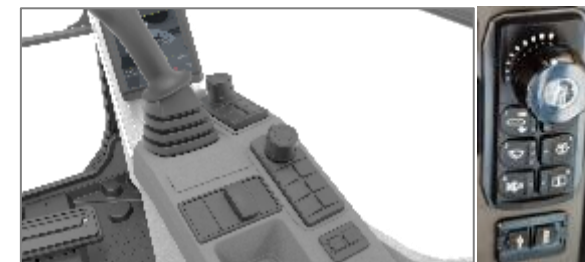
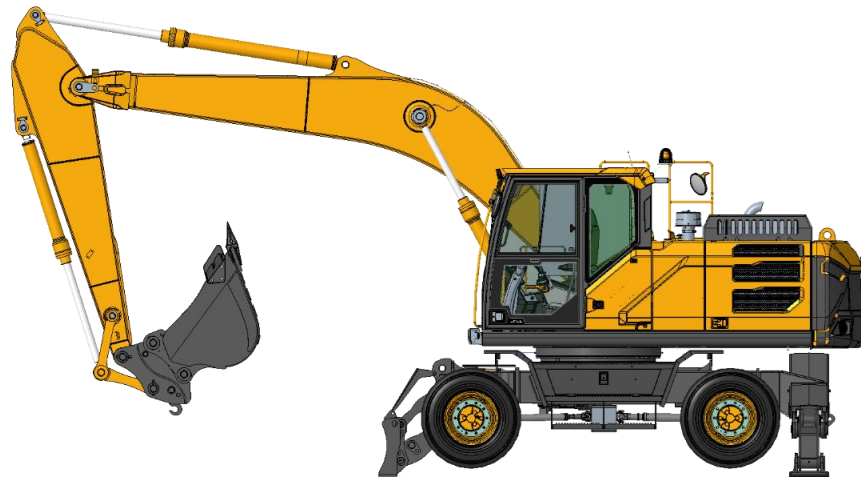
➤ Safe and comfortable, convenient maintenance

Open view comfortable cab, mechanical suspension seat, flexible operation, centralized arranged filters

Product Advantages-Safe and comfortable, convenient maintenance

New cab new interior

Comfortable operation



KEYPAD



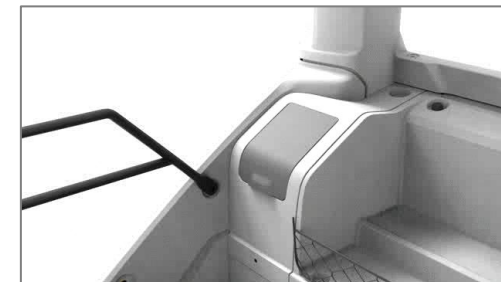
Car stage cabin



8 inch LCD display



Wraparound AC conditioner port



Warm/cold box

Product Advantages-Safe and comfortable, convenient maintenance

New cab new interior



Better right/left view



Large skylight for better view



New safety lock bar, more stronger



New LED interior lamp





Product Advantages-Safe and comfortable, convenient maintenance

Comfortable

comfort			
Cabin	Seat	Adjustable column	Keypad
			
High end cabin, large space and view, shock absorb	Multi-direction adjustable seat	Adjustable column for different operator	Keypad gathered all switch for easy touch



Product Advantages-Safe and comfortable, convenient maintenance

Safety

Safety			
ROPS cab	Emergency stop switch	Rear camera	Rotary beacon
			
With ROPS cab, for operation safety	With emergency stop switch, for stop the machine in emergency situation	With rear camera for safety	With rotary beacon for alarm

Product Advantages-Safe and comfortable, convenient maintenance

Safety

Safety	
Hydraulic lock	Service break
	
Dozer and support leg cylinder has hydraulic lock, it can keep its position and avoid cylinder retract when digging work	Double circuit breaking , one circuit lose function ,other one can still work, with accumulator for breaking ability when engine shut off

Product Advantages-Safe and comfortable, convenient maintenance

Safety



With double safety lock , the long safety lock bar for hydraulic system , the short one for rise operating box and also can realize long safety lock bar when operate , to keep security 。

Product Advantages-Safe and comfortable, convenient maintenance

Convenience



With large tool box



With tire stop block



Fuel filling pump is optional for quick fuel filling

Product Advantages-Safe and comfortable, convenient maintenance

Lamp



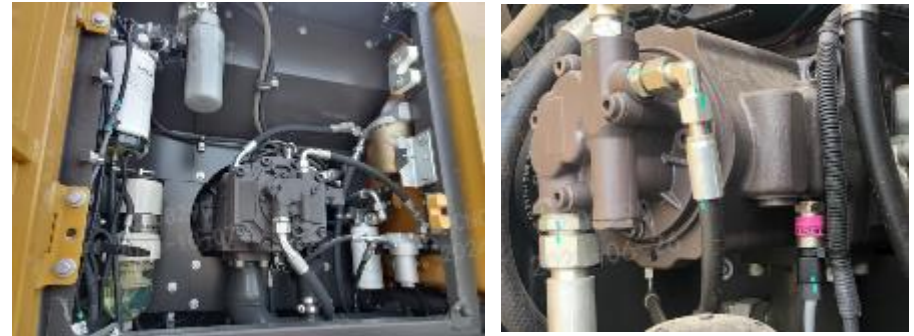
E7210H has two frame lamp, two lamp on the top of cab(LED), two boom lamp(LED), rear cab lamp and counterweight lamp(optional), for better illuminate performance

Product Advantages-Safe and comfortable, convenient maintenance

Maintenance convenient



- Large open size engine hood



- Filters all gathered together, pump pressure sensor



- Lubrication pipes gathered together



- IECU maintenance remind, filter block remind, water in fuel remind, and machine running parameter

Product Advantages-Safe and comfortable, convenient maintenance

Maintenance convenient



E7210H AC filter position at right side of cab, more convenient to replace the filter;
Coolant filling and discharge easy.

CONTENTS

目录

01

Product Overview

02

Product Advantages

03

Optional Module

04

Product Comparison



Reliability In Action

可靠承载重托

Customer Focus

以客户为中心