

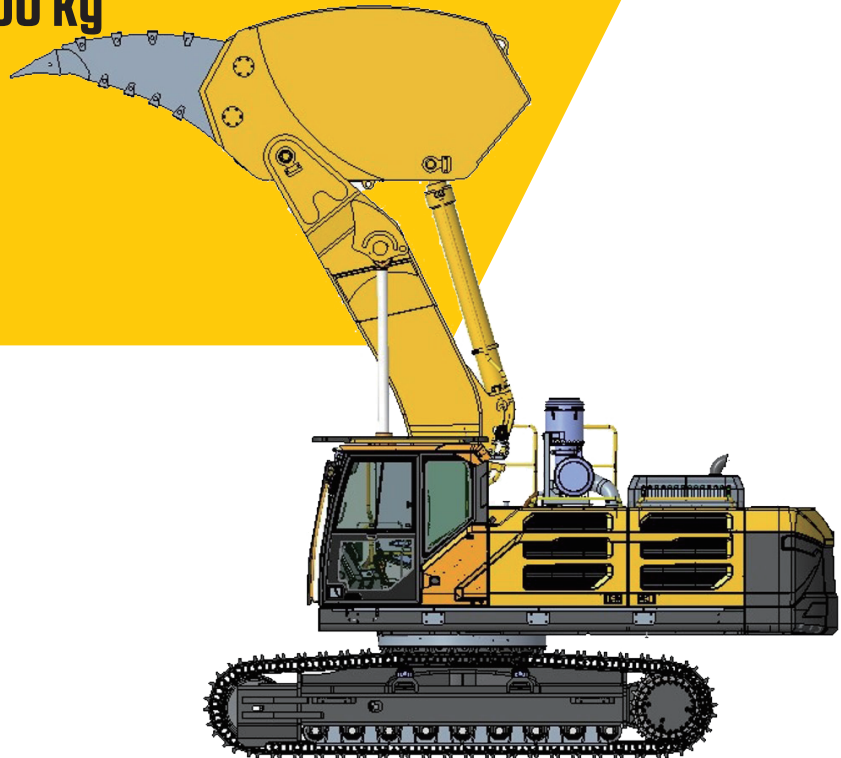


Reliability In Action

E6600HS RIPPER EXCAVATOR

Operating weight: 62000 kg

Engine power: 300 kW



Mine Vajra Arm

Reinforced stick, specially designed for hard rock crushing. It has a maximum digging force of 617.8 kN, boosting the rock-crushing efficiency by 35%.

Unicorn Arm Ripper

Specialized Boom and integrated with a stick ripper. Equipped with diamond-tipped teeth, it offers more efficient performance in frozen soil or asphalt crushing operations.

E6600HS

Main specifications

Specifications		Service capacity		Overall specifications		Unit: mm
Operating Weight(kg)	62000	Fuel Tank(L)	760	A Overall width of upper assembly		3235
Boom Length(mm)	4420	Hydraulic Oil Tank(L)	235	B Overall width		3565
Arm Length(mm)	1230	Engine Oil(L)	52	C Overall height of cab		3380
Engine		Hydraulic System(L)	550	D Tail swing radius		4025
Engine Model	6WG1	Cooling System(L)	70	E Overall height of engine hood		2989
Engine Type	Four-stroke, supercharged, intercooled			F Counterweight clearance		1300
Emission	GB/T20891-2014(China III)			G Wheel base		4420
Engine Power(kW)	300			H Track length		5480
Rated Engine Speed(r/min)	1800			I Track gauge		2740
Maximum Torque (N.m)/Rotation Speed (r/min)	1932/1400			J Track width		600
Displacement(ml)	15681			K Min. ground clearance		527
Main performance				L Overall length		11140
Traveling Speed (low/high) (km/h)	3.2/5.5			M Overall height of boom		3671
Slewing Speed (r/min)	8.5					
Gradeability	35°					
Average Ground Pressure (kPa)	105.8					
Bucket Digging Force (ISO) (kN)	617.8					
Arm Digging Force - ISO	569					
Max. Drawbar Pull	333.7					
Travelling section						
Number of Track Shoes	50					
Number of Carrier Roller (one side)	2					
Number of Supporting Wheel (one side)	9					
Track Shoe Width (mm)	600					
		Standard configuration		Overall range		Unit: mm
		Isuzu 6WG1		A Max. digging reach		7047
		Specialized Boom and Arm		B Max. digging reach on ground		6658
		Fully Electric Control		C Max. digging depth		2915
		Hydraulic Drive		D Max. cutting height		7141
		ROPS Cab (with air conditioning)		E Min. front swing radius		4131
		Mine Vajra Arm / Ripper				
		Optional equipment				
		Fuel Pump				
		Led-out Fuel Drain Valve				
		700/800/900mm Track Shoe With Double Grousers				
		Light Duty Front Protective Net for CAB				
		Heavy Duty Top Protective Net for CAB				

*SDLG reserves the right to change specifications and materials at any time without prior notification. Features of the machine in photos may include additional equipment.If you need more information and available options, please contact your local distributor or SDLG.



Shandong Lingong Construction Machinery Co., Ltd.

Add: Lingong Industry Park, Economic Development Zone, Linyi, Shandong, P. R.China
Tel: 0086-531-66590505 Fax: 0086-531-66590505 E-mail: export@sdlg.com