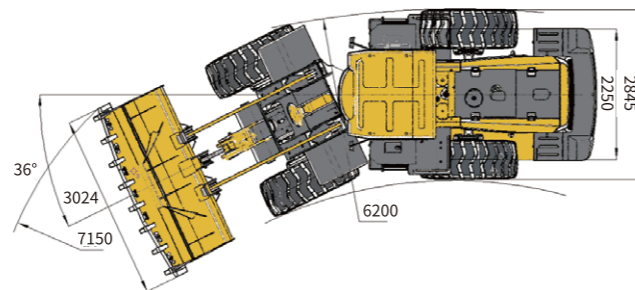
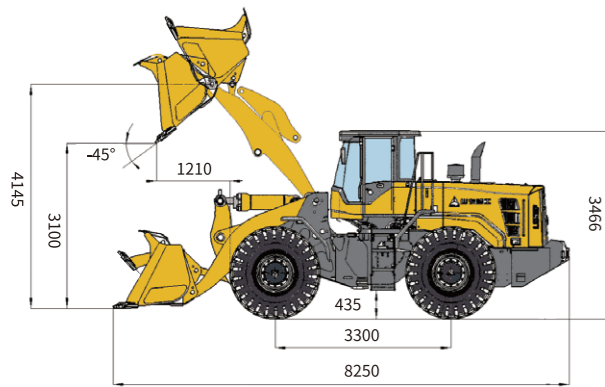


Main Parameter (Standard Equipment)

Item	Specifications	Item	Specifications
Overall parameter		Speed at FI(km/h)	0-13
Operating weight (kg)	17080	Speed at FII(km/h)	0-38
Rated load (kg)	5300	Speed at RI(km/h)	0-17
LxWxH (mm)	8250×3024×3466	Hydraulic system of working device	
Bucket capacity (m ³)	3.0	System pressure(Mpa)	19.7
Max. tractive force (kN)	155	Total cycle time(bucket lift&dump&fall)(s)	≤9.8
Max. breakout force (kN)	≥175	Steering system	
Tipping load (kN)	≥110	System pressure(Mpa)	18
Engine		Fill capacity	
Rated power@speed(kW@r/min)	162@2200	Fuel (L)	280
Maximum torque@speed(kN@r/min)	950@1400	Hydraulic oil (L)	215
Emission standard	Tier II (GB 20891-2007)	Engine (L)	20
Transmission system		Transmission (L)	44
Transmission type	Planetary power shift	Drive axle (L)	Front 20+2×5, rear 16+2×5
Gears	F2 & R1	Braking system (L)	4



L956HE WHEEL LOADER

Operation Weight:17080 kg
Bucket capacity: 3.0 m³
Engine Power: 162 kW

Reliability in Action



Congratulations to SDLG on winning
the EFQM Global Excellence Award
One of the world's top three quality awards



Shandong Lingong Construction Machinery Co., Ltd.

Add: Lingong Industry Park, Economic Development Zone, Linyi, Shandong, P. R. China
Tel: + 86-531-66590505 Fax: + 86-531-66590505 E-mail: export@sdlg.com Website: www.sdlg.com



L956HE Wheel Loader

HIGH EFFICIENCY

- Weichai Engine Tier 2
- The energy-saving low-speed engine fits well with the high-efficiency and realizes a comprehensive energy saving of more than 10%
- High market share and high reliability; Low maintenance cost



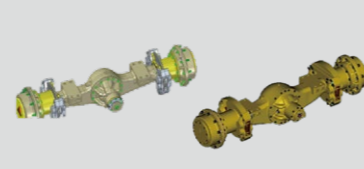
HIGH RELIABILITY

- SDLG planetary transmission, F2/R1
- Hydraulic power shift Easy operation, high reliability, convenient maintenance. After years of market validation, long service life



HEAVY-DUTY

- Enhanced front drive axle and oscillating rear drive axle jointly developed by Volvo and SDLG, carrying ability can reach 35T
- Stable and reliable performance, convenient operation and maintenance
- Double-swing-arm connection, stronger bearing capacity, higher reliability



GREATER RELIABILITY

- Wide articulated frame with VOLOVO technology, which has high strength and long service life
- Structures like frame and boom are optimized and enhanced, which largely increased the service life of the machine
- Long axle base and enlarged counter weight design ensures a stable working operation



GREATER LIFTING CAPACITY

- Rated load is improved to 5.3 ton, correspondingly the bucket volume is 3.0m³, will give you higher return of investment
- Trapezoidal structure of leading plate, small working resistance, shovel with a hard material, loading capacity increases by 10%



NEW APPEARANCE

- SDLG new H series appearance, including the new cab, new engine hood and counterweight which looks more powerful and beautiful



RELIABLE & EFFICIENT HYDRAULICS

- Optimize the design of working efficient hydraulic system
- Load sensing steering system provides easy and flexible steering operating experience
- Famous brand multiway valves, pumps and hydraulic components which are reliable and highly efficient are adopted



COMFORTABILITY

- Arc shape front glass, giving more operating spaces and good vision
- New H series cab, larger space, better sealing performance, more comfortable and low noise
- More air vents and new rock switch arrangement bring you new driving experience



SERVICEABILITY

- New designed Engine hood provides larger opening angle, enable the technician do the service and repair easily
- Side-opening type steel-made engine hood with large side door, which is easy to maintain. Oil filters, air filters are all arranged in one side, can do the maintenance at one stop



Standard Configurations

Shangchai SC11CB220G2B1		Radio
SDLG transmission		Sun visor
SDLG enhanced axle		clothes-hook
Pilot control	A	Cup holder
Load sensing full hydraulic steering		Front wiper
3.0m³ gp bucket with teeth		Work lights
New H series cab		Backing-up alarm
Adjustable steering column	B	Tire: 23.5-25-18PR-L3(Front) ; 23.5-25-16PR-L-3(Rear)
New rock switch	C	Engine fan guard
Fresh air conditioning	D	Air pre-filter
Digital combination instrument	E	Power switch
Centralized control box	F	Tool box
Rearview mirror		Three-stage fuel filter



Optional Equipment

Finger tip lever	A	Rotating beacon	License plate bracket	3.6m³-4.5m³ light material bucket	E
23.5-25-20pr-13	B	Rotatable oil cooler	Heater	Tire chain	
23.5-25-20pr-e-2/l-2		Seat belt	3.0m³ bucket		
LED work lights	C	Air intake preheating	2.7m³ rock bucket	D	



* The right of final interpretation of the abovementioned parameters shall be reserved by SDLG. No further notice will be given in case of any change. Illustrations in the text may not always be the standard illustrations for this model.