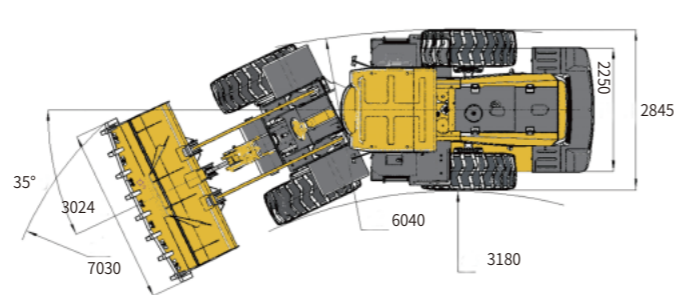
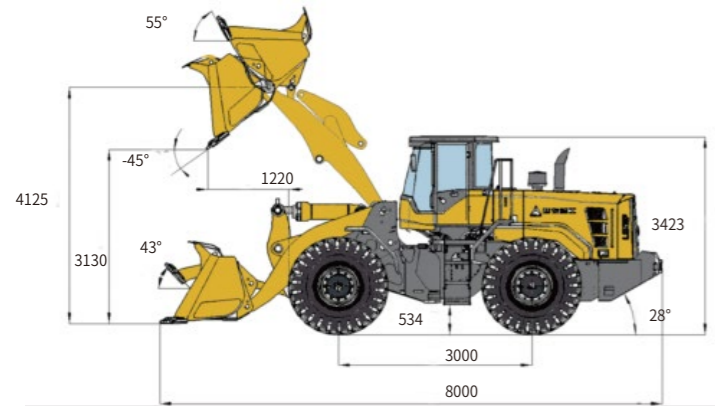


Main Parameter (Standard Equipment)

Item	Specifications	Item	Specifications
Overall parameter		Speed at FI (km/h)	0~13
Operating weight (kg)	16900	Speed at FII (km/h)	0~38
Rated load (kg)	5000	Speed at RI (km/h)	0~17
LxWxH (mm)	8000x3024x3423	Hydraulic system of working device	
Bucket capacity (m ³)	2.8	System pressure (Mpa)	18.5
Max. tractive force (kN)	152	Total cycle time(bucket lift & dump&fall) (s)	≤9.3
Max. breakout force (kN)	≥175	Steering system	
Tipping load (kN)	≥110	System pressure (Mpa)	16
Engine		Fill capacity	
Rated power@speed (kW@r/min)	162@2200	Fuel (L)	260
Maximum torque@speed (kN@r/min)	860@(1400-1600)	Hydraulic oil (L)	230
Emission standard	GB 20891-2007	Engine (L)	22
Transmission system		Transmission (L)	44
Transmission type	Planetary power shift	Drive axle (L)	26+26
Gears	F2 & R1	Braking system (L)	4



L953H WHEEL LOADER

Operation Weight: 16900 kg
Bucket Capacity: 2.8 m³

Reliability in Action



Congratulations to SDLG on winning
the EFQM Global Excellence Award
One of the world's top three quality awards



Shandong Lingong Construction Machinery Co., Ltd.

Add: Lingong Industry Park, Economic Development Zone, Linyi, Shandong, P. R. China
Tel: +86-531-66590505 Fax: +86-531-66590505 E-mail: export@sdlg.com Website: www.sdlg.com

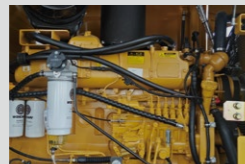




L953H Wheel Loader

High Efficiency

- WEI CHAI Engine Tier 2.
- The energy-saving engine fits well with the high-efficiency and realizes a comprehensive energy saving of more than 10%.
- High market share and high reliability; Low maintenance cost.



High Reliability

- SDLG planetary transmission, F2/R1, Hydraulic power shift.
- Simple operation, high transmission efficiency. After years of market validation, long service life.
- Adjusted the gearbox reduction ratio to improve the traveling speed and V-loading efficiency.



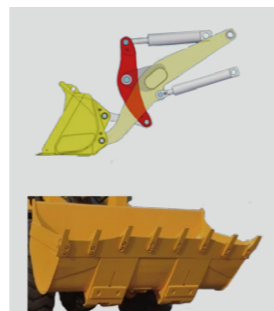
Heavy-Duty

- SDLG special reinforced drive axle.
- Main transmission and wheel deceleration transmission ratio optimization, to increased reliability by more than 60%.
- Stable and reliable performance, convenient operation and maintenance.



Reliability and Efficiency

- Movable arm using lightweight technology, each work cycle of the payload increased 2%, dig up force increased by 15%.
- Trapezoidal structure of leading plate, small working resistance, shovel with a hard material, loading capacity increases by 10%.
- Using enhanced movable arm and beam, continuous intelligent welding technology, blasting treatment after welding. Large transmission ratio, improve ground lifting force and shovel digging force.
- The bucket bottom and side panel adopts flitch to strengthen, more wear-resisting, improve more than 60% in the service life.



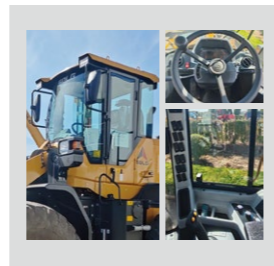
Greater Carrying Capacity

- The reinforced front and rear frame that have passed 200k hours of fatigued enhancement tests and has high strength and long service life.
- Enlarged wheel base of the traditional SDLG 953, which matching the larger wheel track (2250mm), ensures a stable working operation and maintaining the characteristics of flexible steering.



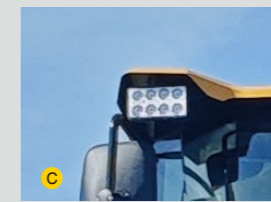
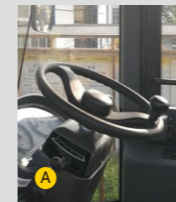
Comfortability

- New designed H-series cabin. The visibility, the accessibility of function switch, the comfortability and the sealability of cabin has improved significantly.



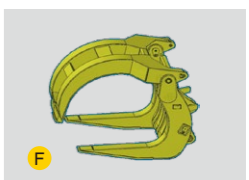
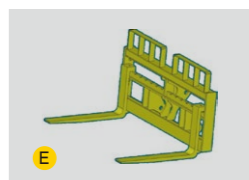
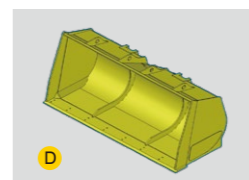
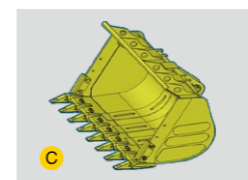
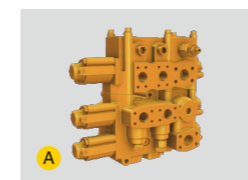
Standard Configurations

WD10G220E21	Radio
SDLG transmission	Backing-up alarm
SDLG dry brake axle	Led working lights C
Pilot control	Front wiper
Load sensing full hydraulic steering A	Digital combination instrument
2.8m³ GP bucket with teeth	Rear view mirror
Standard cabin	Lockable fuel tank
2-spool combined main valve B	Air inflation tube
Heater	Mechanical suspension seat
23.5-25-16PR-L-3 Tire	Rotary hydraulic oil tank
Air pre-filter	Circular fuel level indicator D
Tool box	Steel base engine hood
Mechanic parking brake	



Optional Equipment

3-spool combined main valve A	Pallet fork E	Air intake preheating
23.5-25-16PR radial tire B	Log grapple F	Bucket with wear plate
23.5-25-16PR block pattern tire B	Air conditioning	3rd function connector
2.4m³ rock bucket C	License plate bracket G	Tire chain
3.0m³-4.5m³ light material bucket D	Low temperature hydraulic oil	Adjustable handrest



* The right of final interpretation of the abovementioned parameters shall be reserved by SDLG. No further notice will be given in case of any change. Illustrations in the text may not always be the standard illustrations for this model.