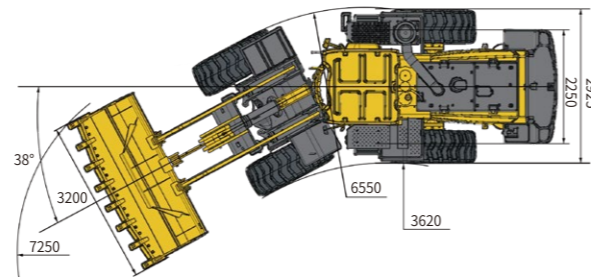
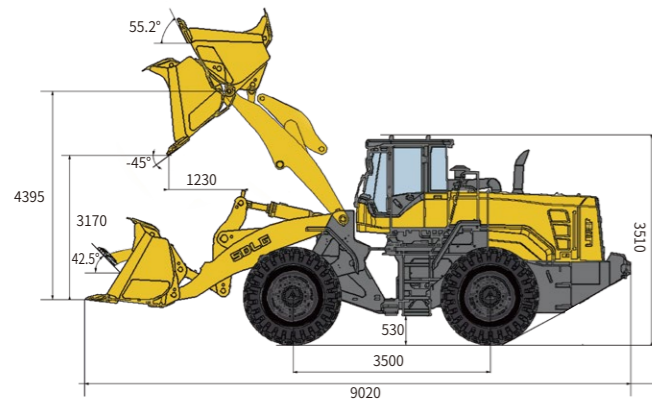


Main Parameter (Standard Equipment)

Item	Specifications	Item	Specifications
Overall parameter		Speed at FII/RII (km/h)	0 ~ 12.5
Operating weight (kg)	21300	Speed at FIII/RIII (km/h)	0 ~ 24.3
Rated load (kg)	7000	Speed at FIV/RIV (km/h)	0 ~ 35.9
LxWxH (mm)	9020x3200x3510	Hydraulic system of working device	
Bucket capacity (m ³)	4.0	System pressure	21MPa
Max. tractive force (kN)	200	Total cycle time (bucket lift & dump & fall)	≤9.8s
Max. breakout force (kN)	≥215	Steering system	
Tipping load (kN)	140.2	System pressure	16MPa
Engine		Fill capacity	
Rated power/speed	199kw(270Hp)@2200r/min	Fuel (L)	350
Emission standard	GB 20891-2014 (stageIII)	Hydraulic oil (L)	220
Transmission system		Engine (L)	20
Transmission type	Axis-fixed electro-hydraulic	Transmission (L)	55
Gears	F4 & R4	Front axle (L)	40
Speed at FI/RI (km/h)	0 ~ 6.8	Rear axle (L)	36



L970H WHEEL LOADER

Operation Weight: 21300kg
Bucket Capacity: 3.5-4.0m³
Engine Power: 199kW

Reliability in Action



Congratulations to SDLG on winning
the EFQM Global Excellence Award
One of the world's top three quality awards



Shandong Lingong Construction Machinery Co., Ltd.

Add: Lingong Industry Park, Economic Development Zone, Linyi, Shandong, P. R. China
Tel: + 86-531-66590505 Fax: + 86-531-66590505 E-mail: export@sdlg.com Website: www.sdlg.com

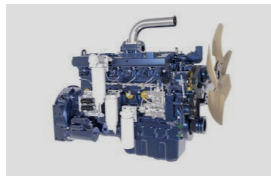


L970H Wheel Loader



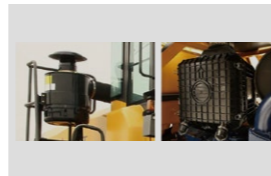
High Efficiency

- Weichai high efficiency engine, Tier T3.
- The energy-saving low-speed engine fits well with the high-efficiency and realizes a comprehensive energy saving of more than 10%.
- High market share and high reliability; Good adaptability; Low maintenance cost.



Adaptability

- Equipped the oil-bath filter to meet the abominable environment(option).



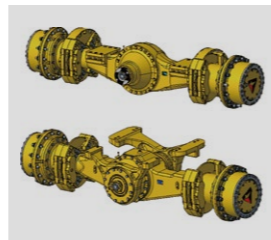
High Reliability

- It is applied with the VOLVO HTE220B fixed-shaft electro-hydraulic shift transmission of four forward gears and four reverse gears, which features high transmission efficiency.
- It has the function of power cut-off and neutral gear lock-up, enabling stable and impact-free gearshift and high reliability. The KD gearshift function configured reduces the operating efforts and enhances the flexibility and efficiency.



Heavy-Duty

- Heavy-duty drive axle and oscillating rear drive axle jointly developed by Volvo and SDLG; Meet the driving force and escape ability of bad conditions.
- The unique rear axle double swing arm connection makes the load distribution of the whole machine reasonable, large bearing capacity, long service life and high reliability.



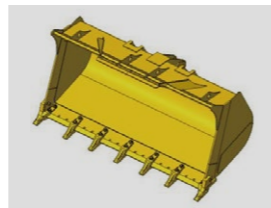
Greater Reliability

- Fully new generation of boxed frame design by VOLVO and SDLG team.
- The load distribution is reasonable; Fatigue test for 200 k Hours, to get the greater reliability.



Greater Carrying Capacity

- Serialized low - resistance buckets not only meet the needs of different working conditions and customers, but also improve work efficiency and create more value for customers.



High Quality

- Hydraulic system components use internationally renowned suppliers; Large flow, high pressure, smooth composite action.
- Lightweight operation, high efficiency and reliable performance.



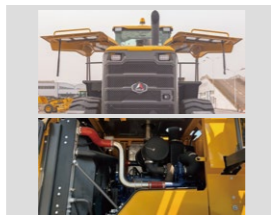
Comfortability

- The super-large, full-view, Low noise, Double curved arc front windshield, Luxury seat and User-friendly design, to build the best operating environment. Inner space increased by 15%; Width of view increased by 20%; Sealing property increased by 35%; with powerful air condition.



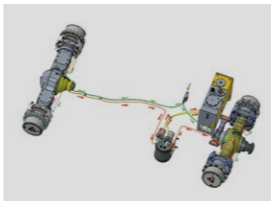
Convenience

- Automotive-grade mold-formed steel hood with high structural strength and elegant appearance.
- The double gas spring opens the hood and is easy to operate.
- Large opening side door maintenance is more convenient.



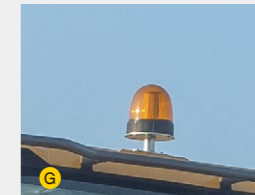
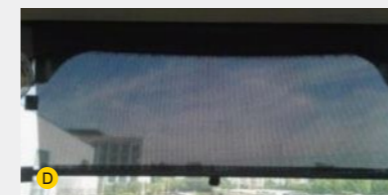
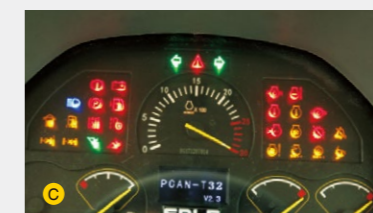
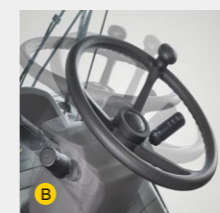
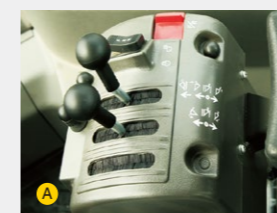
Safety

- Equipped with a brake circulation system to prevent high temperatures in the braking system, ensuring efficient and reliable braking.



Standard Configurations

Weichai WP10G270E341 engine	Backing-up alarm
Volvo HTE220B Auto Transmission	26.5-25-20PR-L3 (Front tire)
SDLG axle	26.5-25-20PR-L3 (Rear tire)
Finger tip lever	Engine fan guard
4.0m³ GP bucket A	Neutral start
Standard cabin	Air pre-filter
Fresh air conditioning	Power switch
Adjustable steering column B	Tool box
Digital combination instrument C	Rotating LED beacon G
Air control parking brake	Full hydraulic steering
Radio	Variable flow steering system
Sun visor D	Hydraulic drive cooling
Clothes-hook	Box type frame
Cup holder	93 type dust-filter
Centralized control box E	Large space cab
Front & rear wiper	
Work lights F	



Optional Equipment

3.5m³~4.0m³ GP Bucket	Warm air blower	Oil bath air-filter
4.2m³~5.5m³ High Capacity Bucket	High Lift Arm	Rear view monitoring system
3.0m³ Rock Bucket	High-Temperature Module for Hydraulic Oil	GPS(For India)
Wear plate	Low-Temperature Module for hydraulic oil and antifreeze	Tire chain
Fops/Rops Cabin	26.5R25-2STTL radial tire	