

# L958H

## Configuration

### Main standard configuration

#### Engine

- BFM8-22T3

#### Transmission system

- SDLG VRTE205

#### Hydraulic system

- Pilot control, load sensing, Single pilot lever, 3-spool valve

#### Boom type

- STD

#### Axle

- SDLG AL38W wet axle

#### Tire

- Front: 23.5-25-18PR-L-3; Rear: 23.5-25-16PR-L-3

#### GAB

- Rops conditioner

#### Other

- Start interlock
- Tachometer
- Adjustable steering column
- Radio
- Rotating beacon

### Optional equipment

- GP bucket(3.0m<sup>3</sup>/3.2m<sup>3</sup>×3016,wear plate)
- GP bucket(3.0m<sup>3</sup>/3.2m<sup>3</sup>×3024,assembled teeth)
- Enlarged bucket(3.6m<sup>3</sup>/4.2m<sup>3</sup>/4.5m<sup>3</sup>×3016)
- Enlarged bucket(3.6m<sup>3</sup>/4.2m<sup>3</sup>/4.5m<sup>3</sup>×3016,wear plate)
- Rock bucket(2.7m<sup>3</sup>×3093)
- Warm blower
- TBOX (for Brazil)
- Rear view monitoring system
- Tire(front:20PR, rear:18PR,for Vietnam)
- Tire(20PR,for mine or quarry)
- Tire(18PR,sand type, for desert or swamp)
- Tire(20PR, herringbone pattern )
- Tire(16PR, herringbone pattern )
- Anti-skid chains(23.5-25 L3 50AF-252KG)
- Anti-skid chains(23.5-25 L3 50DF-320KG)



## Reliability In Action

# L958H WHEEL LOADER

Operating weight: 18000 kg

Bucket capacity: 3.5 m<sup>3</sup>

Engine power: 170 kW



Reliability

Comfort

Convenience



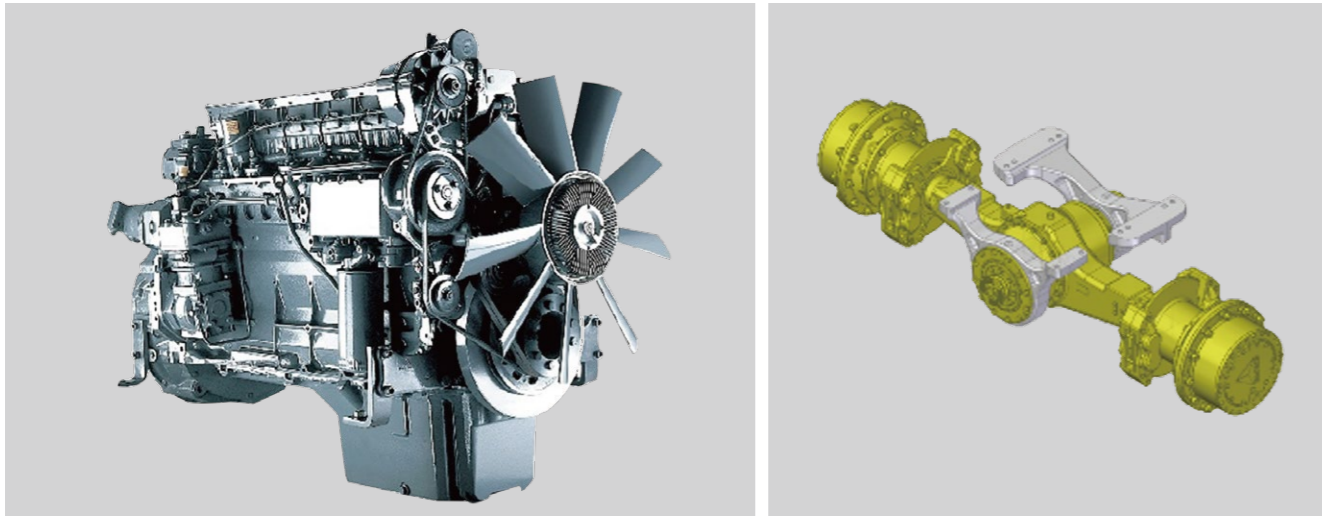
**Shandong Lingong Construction Machinery Co., Ltd.**

Add: Lingong Industry Park, Economic Development Zone, Linyi, Shandong, P. R. China  
Tel: + 86-531-66590505 Fax: + 86-531-66590505 E-mail: export@sdlg.com Website: www.sdlg.com

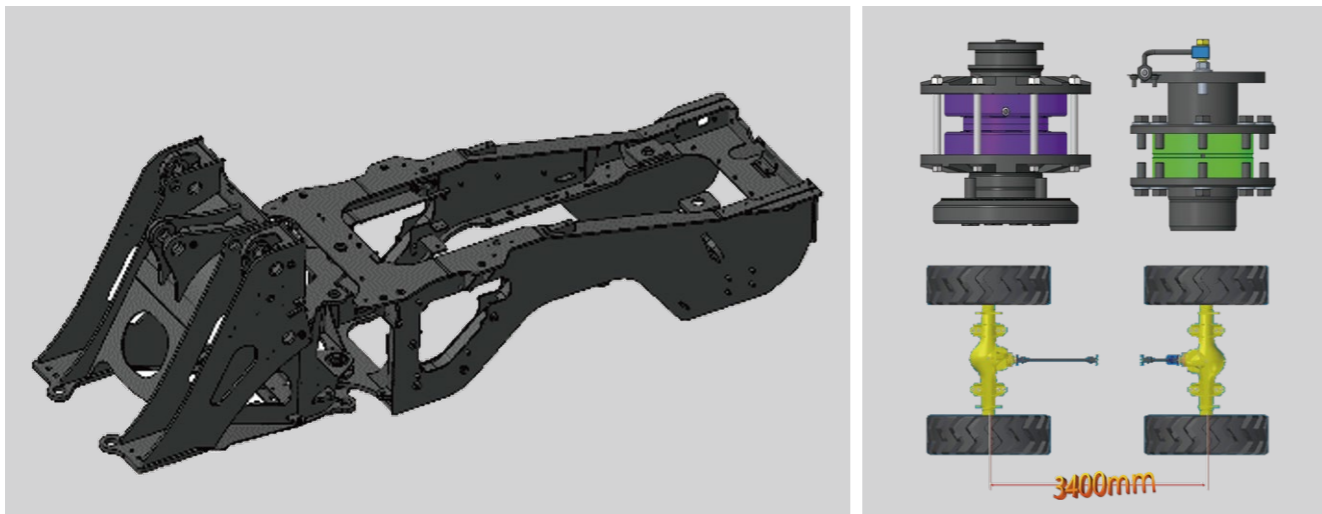
# L958H

## Reliable

- > The BFM8 engine features high torque, strong power, high quality, and high product reliability. It also has a large market presence.
- > Equipped with a unit pump and mechanical injectors, it has good fuel adaptability and stable engine performance.
- > Adopting the SDLG wet axle, it has reasonable load distribution and strong load-bearing capacity. The wet braking system provides good braking effect, ensuring safety and reliability.



- > Optimization design front and rear frame ,eliminate stress concentration, the load distribution is reasonable, with high stability and reliability , tapered bearing are used in the lower hinge joint , Large carry capacity and torsion resistance.
- > Rated load of 5.5T, wheelbase 3400mm, stable and comfortable operation.



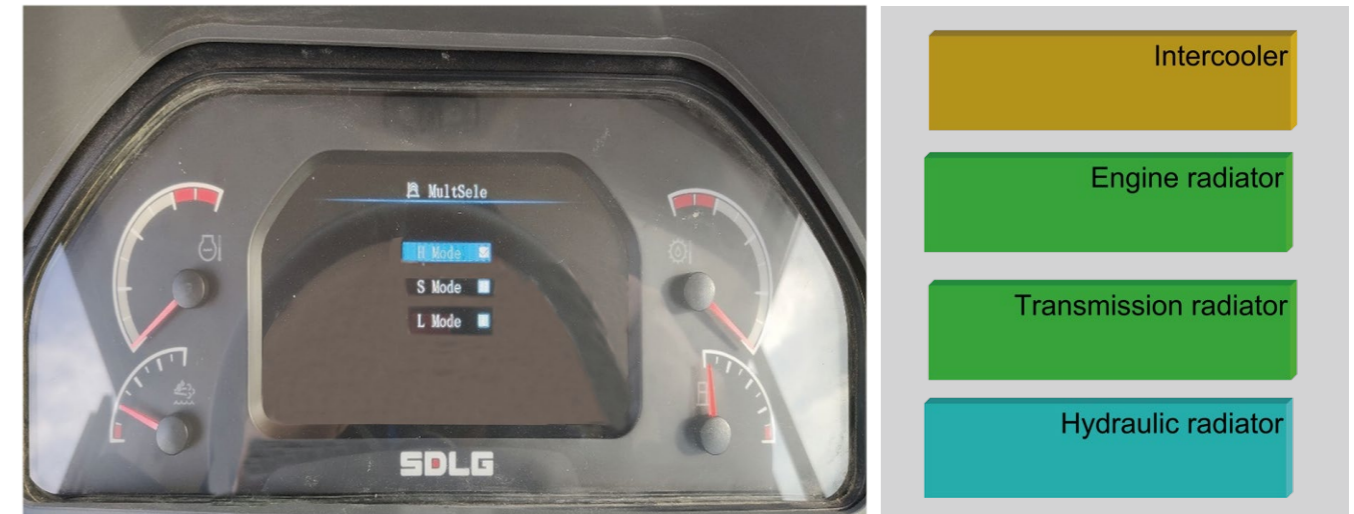
## Energy saving

# L958H

- > The load-sensing full-hydraulic steering system features a fast steering response speed and minimal energy loss.
- > The dual-pump confluence hydraulic system reduces the power loss of the hydraulic system, achieving energy efficiency.



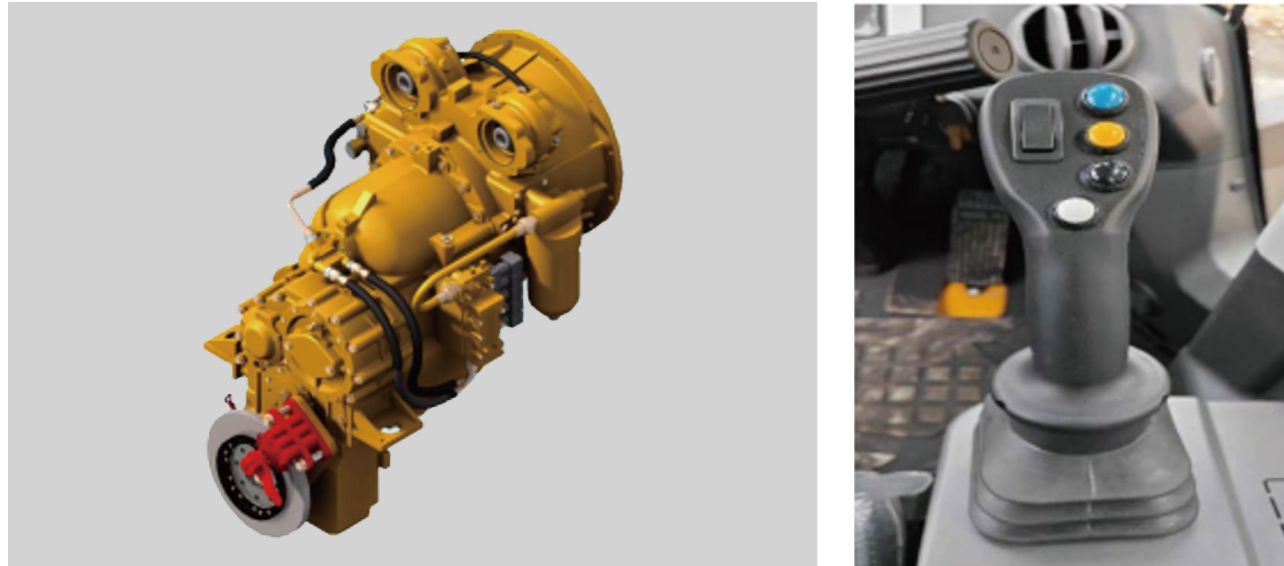
- > Three levels of power modes are set for different working conditions. Customers can select according to the actual working conditions, achieving high efficiency and energy conservation.
- > The radiators are arranged in a single parallel row, which provides good heat dissipation effects, saves energy, and produces low noise.



# L958H

## Comfortable

- > The automatic transmission can automatically switch gears according to the vehicle speed. It offers a comfortable operation experience and reduces labor intensity.
- > Equipped with pilot-operated dual joystick control, integrating FNR, KD, horn and other functions; flexible and convenient to operate, comfortable to handle.



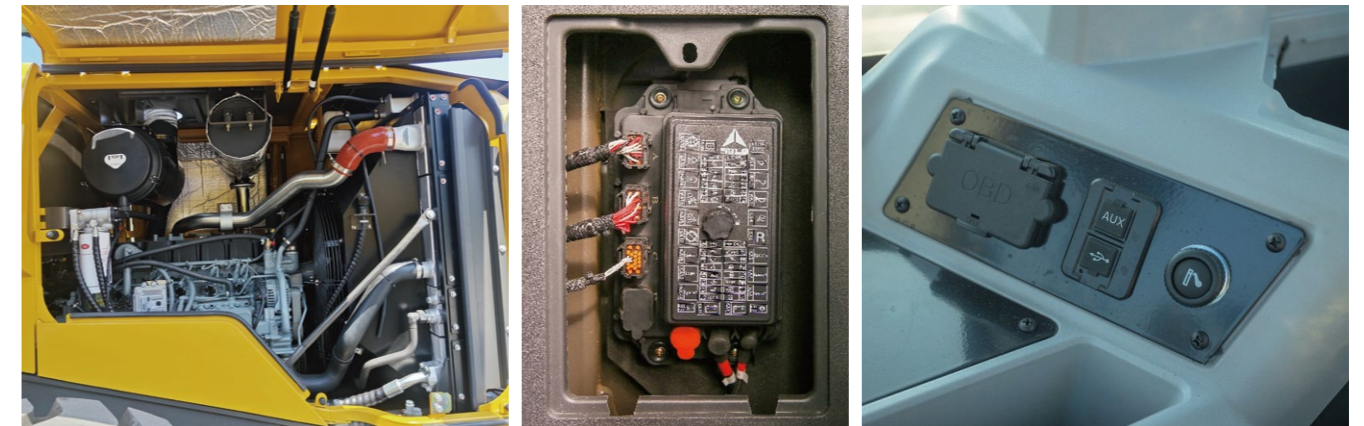
- > The newly designed H-series cab features a brand-new exterior. It has a large interior space and a good field of vision. The sealing performance, shock absorption, and noise reduction effects have been further improved, offering a high level of comfort.
- > The H-series comes with a new interior design. The LCD dashboard and rocker switches are arranged on the column, making the operation convenient.
- > The storage space has been enlarged, and a mobile phone holder has been added.
- > A storage box with both heating and cooling functions has been added, making it more user-friendly.



## Convenient

# L958H

- > The H-series features a large-opening engine hood, providing ample space for maintenance and making it easy to carry out maintenance work.
- > The engine diagnostic interface is located on the right side of the cab, facilitating the diagnosis and inspection of the engine.
- > The fuses are centrally arranged, and the large-sized labels make them easy to check and replace.



- > The transmission oil filler port and the transmission oil filter element are externally installed, facilitating the refilling of transmission oil, the inspection of the oil level, and the replacement of the transmission oil filter element.
- > The lubrication points are arranged in a centralized extended way, making maintenance convenient.





EXPERT



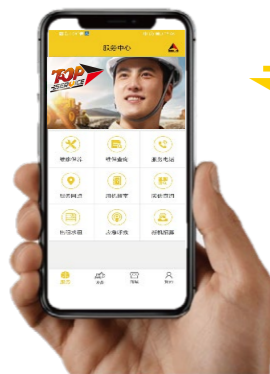
FAST



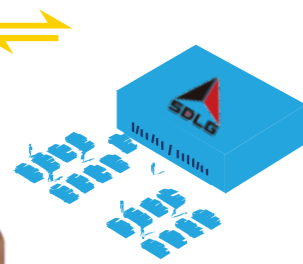
CARE

SDLG dedicated to provide excellent service experience

Customer Enquiry



Service Station



### SDLG System Support

L@M  
Parts Catalog & shopping trolley,  
Technical Files and TSB, PMI

OLDP  
Warranty Information  
feedback and Spare parts sale

3D  
Training System, Structure  
and working principle animation

Fast Service



Customer Call



Field service work order



Technician Arrived site



Calling for Feedback



Customer Verify



Field Service



Incomplete order follow-up



PMM

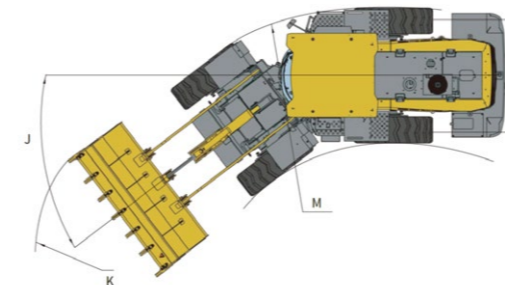
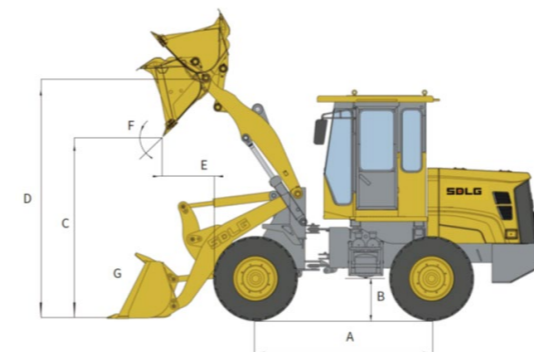


Complaint Management

Standardized Service Process

Item	Specifications
<b>Overall parameter</b>	
Operating weight (kg)	18000
Rated load (kg)	5800
Bucket capacity (m <sup>3</sup> )	3.5
Max. tractive force (kN)	160
Max. breakout force (kN)	180
Tipping load (kN)	110
<b>Engine</b>	
Rated power/speed	162kW(220HP)@2200r/min
Emission standard	GB 20891-2014(stage III)
<b>Transmission system</b>	
Transmission type	Countershaft power shift
Gears	F4 & R4

Item	Specifications
Forward speed	7/12.5/27/38
Reverse speed	7/12.5/27/38
<b>Hydraulic system of working device</b>	
System pressure	19.5MPa
Total cycle time (bucket lift & dump & fall)	10.6s
<b>Steering system</b>	
System pressure	16MPa
<b>Fill capacity</b>	
Fuel (L)	300
Hydraulic oil (L)	240
Engine (L)	20
Transmission (L)	17.1/4.7
Front axle (L)	46
Rear axle (L)	46



Item	Specifications
<b>Overall dimension</b>	
LxWxH	8370x3024x3450mm
Wheel base(A)	3400mm
Min. ground clearance(B)	420mm
Max. dumping height(C)	3110mm
Lifting height(D)	4205mm
Dumping distance(E)	1190mm
Dumping angle(F)	-45°
Bucket rollback at ground level(G)	42°
Wheel tread(I)	2190mm
Steering angle(J)	38°
Horizontal crossing radius(K)	7030mm
Min. turning radius(M)	6030mm

\* SDLG constantly improves its products, and the configuration parameters will be continuously updated. We reserve the right to change the design and parameters without prior notice to users. The product configuration and appearance are subject to the physical object.