

# L936H

## Configuration

### Standard configuration

STD Model	Quick coupler
Weichai WP4.6NG135E670	Weichai WP4.6NG135E670
SDLG TP170 transmission	SDLG TP170 transmission
SDLG AL20A axle	SDLG AL20A axle
Pilot control, load sensing	Pilot control, load sensing
STD boom	STD boom
3-spool valve	3-spool valve
Dual braking pedal	Dual braking pedal
17.5-25-12PR-L-3	17.5-25-12PR-L-3
ROPS cab	ROPS cab
Air Conditioner	Air Conditioner
Start interlock	Start interlock
Tachometer	Tachometer
Radio	Radio
Rotating beacon	Rotating beacon
GP bucket 2.1m³	GP bucket 1.8m³ (Quick coupler, assembled bucket teeth)

### Options

STD Model	Quick coupler
STD bucket 1.6   1.8m³ (assembled bucket teeth)	STD bucket 1.8m³(Quick coupler, wear-resistant plate)
STD bucket 1.6   1.8   2.1m³ (wear-resistant plate)	STD bucket 2.1m³(Quick coupler)
Enlarged bucket 2.2   2.5m³ (W.O wear-resistant plate)	-
Rock bucket 1.5m³	-
Flatfork 1800×1780	Flatfork 1250×2130   1500×1780(quick coupler)
-	Multifunctional bucket 1.8m³ (quick coupler)
Wear-resistant plate 2915 (3 pieces, 16 holes)	
Warm blower	
LED Working lights (2 LEDS   4 LEDS)	
Front combination lights	
Tire protection chains 17.5-25 L3 30AF-170KG   30BF-186KG   30GF-252KG	
Hydraulic oil and antifreeze cold environment module	
Rearview Monitoring system	
Wheel: 17.5-25-1STTL-L-3   12PRTL-L-3   16PR (herringbone pattern)   12PRTL (anti-slip)	
Tire: 17.5-25-12PR-L-2A   12PR (desert type)   16PRTT E-2/L-2 (with inner tube)   20PR-L-3	

\* SDLG constantly improves its products, and the configuration parameters will be continuously updated. We reserve the right to change the design and parameters without prior notice to users. The product configuration and appearance are subject to the physical object.



# Reliability In Action

# L936H WHEEL LOADER

Operating weight: 11300/11550 kg

Bucket capacity: 2.1 m³

Engine power: 99 kW



Reliability

Energy-saving

Comfort and convenience

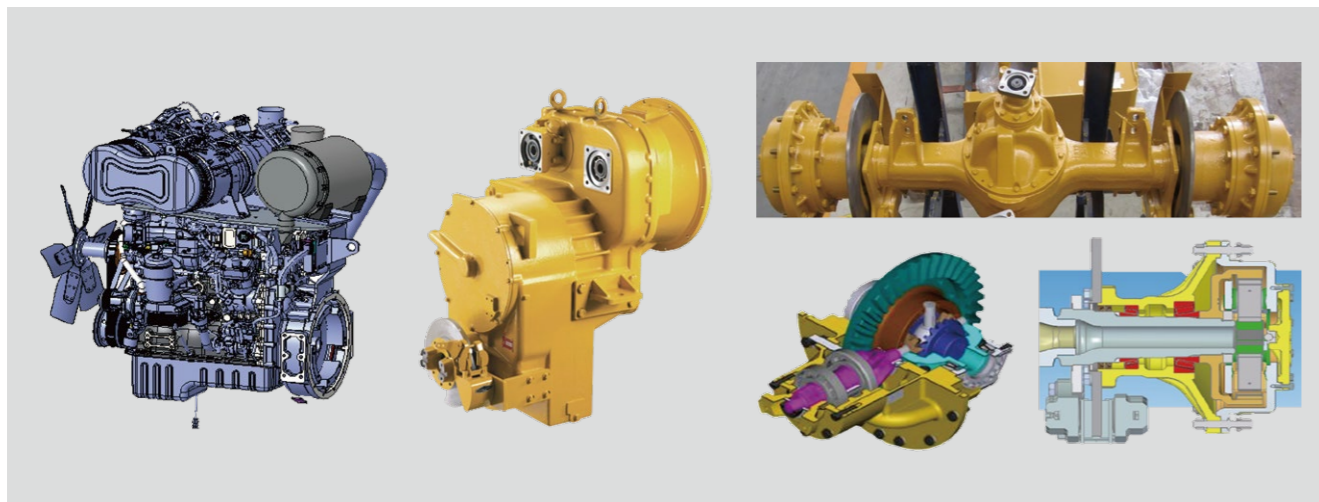


**Shandong Lingong Construction Machinery Co., Ltd.**

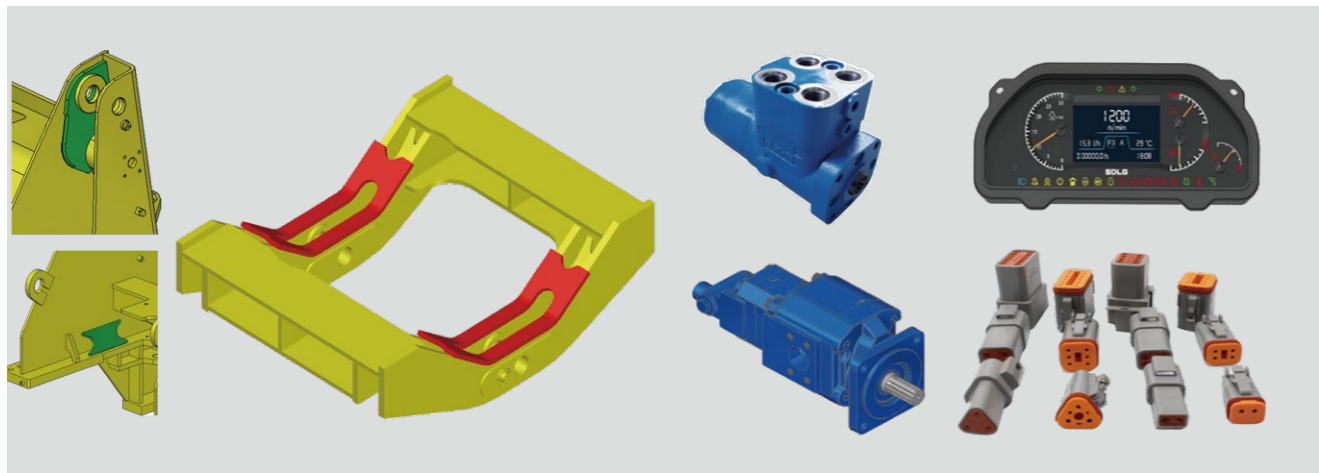
Add: Lingong Industry Park, Economic Development Zone, Linyi, Shandong, P. R. China

Tel: + 86-531-66590505 Fax: + 86-531-66590505 E-mail: export@sdlg.com Website: www.sdlg.com

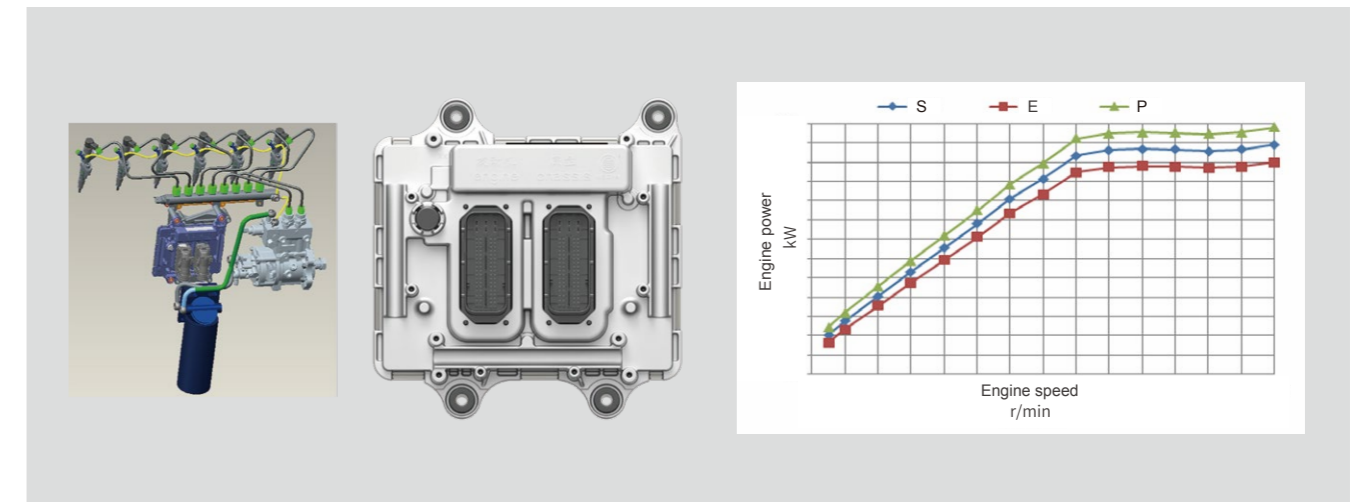
- > Weichai WP4.6N engine, compliant with Euro 5 emission standards, delivers powerful performance. Equipped with high-precision oil filters and air filters, it meets the operational requirements of harsh working conditions with high reliability.
- > SDLG planetary transmission, fully validated in the market, features high reliability and a long service life. SDLG reinforced drive axle, with optimized structure and enhanced strength, has improved overall reliability by 60%.



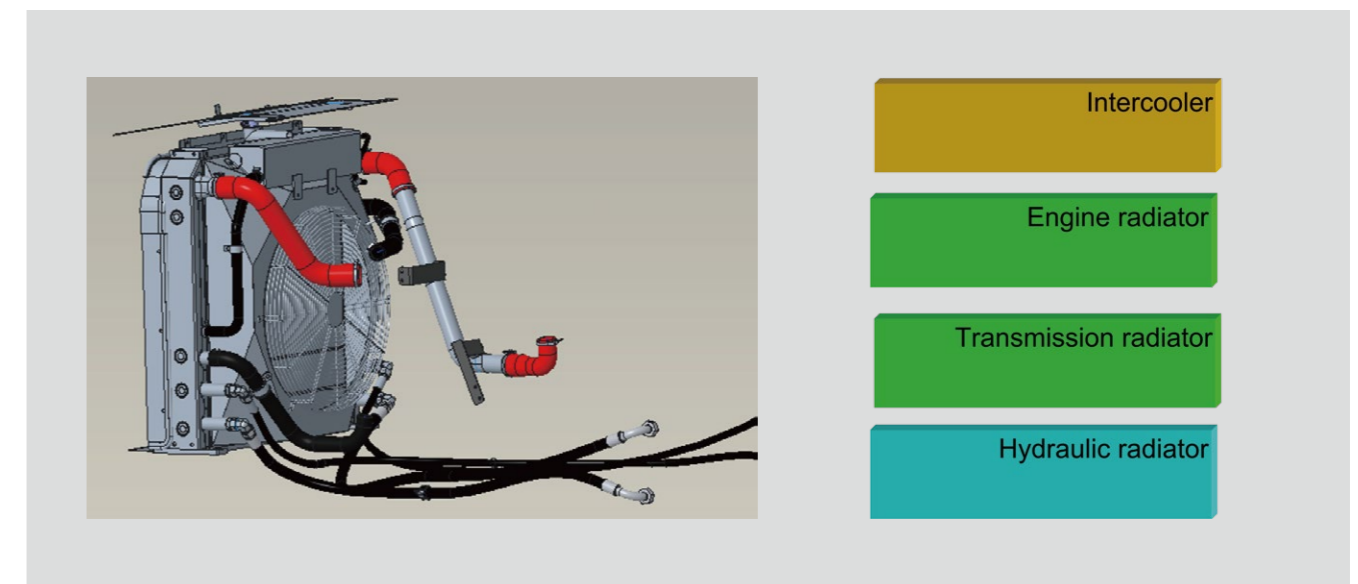
- > Reinforced frame design, with key stress-bearing parts strengthened, ensures strong load-carrying capacity. It eliminates stress concentration and enables reasonable load distribution, resulting in a long service life.
- > Famous-brand hydraulic and electrical components, featuring reliable quality and high durability, ensure efficient and reliable operation of the entire machine.



- > The electronic control high-pressure common rail system allows precise control of injection pressure, injection timing, and injection quantity, achieving fuel efficiency and high performance.
- > Three-level power modes (heavy load P, medium load S, light load E) are set, enabling customers to choose according to working conditions for energy conservation and high efficiency.



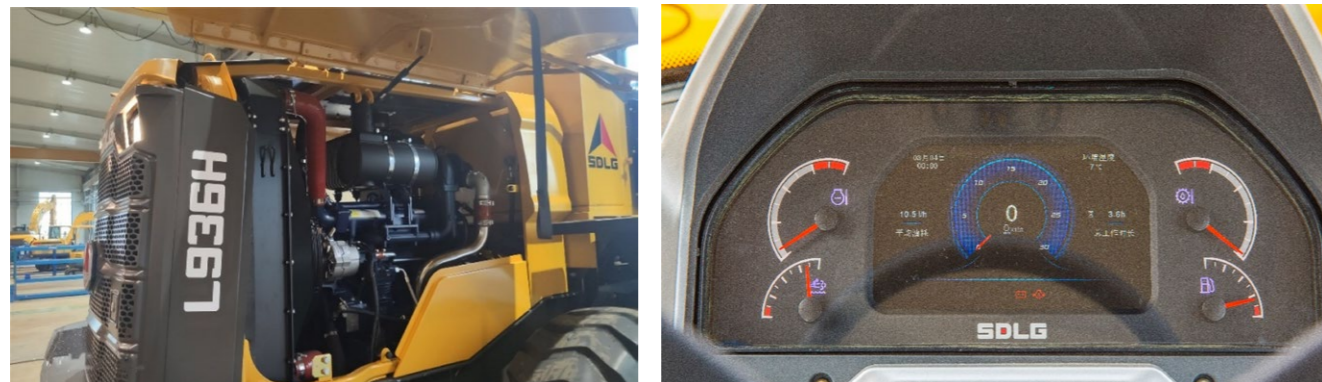
- > The radiator is arranged in a single row horizontally, and the area around the radiator is sealed with steel plates, ensuring good heat dissipation, energy conservation, and noise reduction.



- > High-grade suspended seat, adjustable in multiple angles and dimensions; control buttons, arranged vertically on the right front for easy access; heating and cooling air conditioning for comfortable riding, with a heating and cooling storage box; color multifunctional instrument, luxurious and high-end.



- > Large-opening side covers and rear window grilles, with hood opened with the assistance of dual gas springs, saving time and effort; fuel filters and air filters are centrally arranged on the same side of the engine, making daily maintenance more convenient.
- > Electrical components are centrally arranged: all fuses and relays of the machine are installed in a centralized control box, facilitating maintenance and inspection.



### World-class research and development system



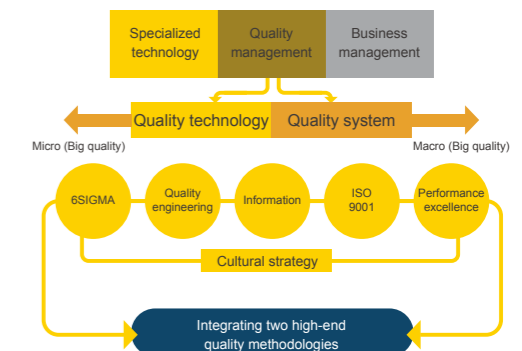
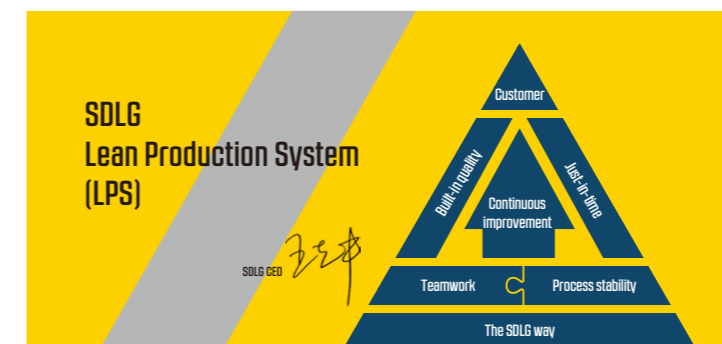
SDLG possesses a world-class technical center and testing laboratory. Its cutting-edge R&D center integrates a 3D design system, Computer Aided Engineering (CAE) analysis, and Product Lifecycle Management (PLM).

### Customer-oriented global development process (GDP)

SDLG sticks to the guideline of "R&D MUST be market-oriented and MUST align with practical operations". Based on customer needs, SDLG maximizes customer values by advanced GDP, teamwork, in-depth core technical research and lean R&D.

### Advanced quality management

SDLG has an ISO 9001 quality management system in place to continually monitor and manage quality across all its operations. As the world's most widely recognized quality management standard, ISO 9001 outlines how to achieve and benchmark consistent performance and service. As a result, SDLG has set a quality target of reducing warranty-period failures. The quality management system has also allowed SDLG to develop its own production philosophy known as the Lingong Production System, which incorporates lean manufacturing techniques. It also oversees the company's supply chain improvements and incorporates Six-Sigma quality improvement.



# L936H

## Top Service



EXPERT



FAST



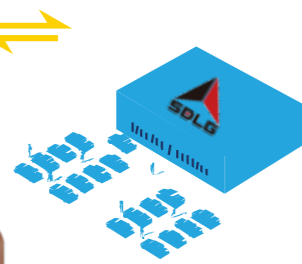
CARE

SDLG dedicated to provide excellent service experience

Customer Enquiry



Service Station



### SDLG System Support

L@M  
Parts Catalog & shopping trolley,  
Technical Files and TSB, PMI

OLDP  
Warranty Information  
feedback and Spare parts sale

3D  
Training System, Structure  
and working principle animation

Fast Service



Customer Call



Field service work order



Technician Arrived site



Calling for Feedback



Customer Verify



Field Service



Uncomplete order follow-up



PMM

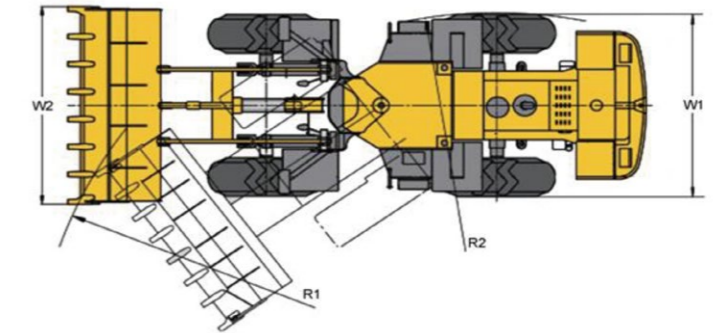
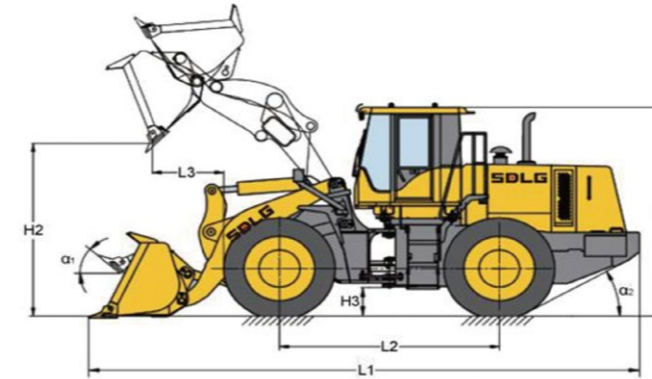


Complaint Management

Standardized Service Process

## Main specifications

# L936H



Overall parameter	STD Model	Quick coupler
Operating weight (kg)	11300	11550
Rated load (kg)	3500	3000
Bucket capacity (m³)	2.1	1.8
Max. tractive force (kN)	≥100	≥100
Max. breakout force (kN)	≥96	≥82
<b>Engine</b>		
Engine power(kW)	99	99
Rated speed(r/min)	2200	2200
Emission standard	EU5	EU5
<b>Transmission system</b>		
Transmission type	Planetary power shift	
Gears	F2R1	
Forward speed (km/h)	13/38	
Reverse speed (km/h)	17	
<b>Hydraulic system of working device</b>		
Working device hydraulic system pressure(MPa)	17.5	
Total cycle time (bucket lift & dump & fall)(s)	≤10.0s	

Steering system	
Steering system pressure (Mpa)	14
<b>Service capacities</b>	
Fuel (L)	160
Hydraulic oil (L)	128
Engine oil (L)	12
Transmission oil (L)	44
Axle (front/rear) (L)	18+18
Antifreeze coolant(L)	33
<b>Overall dimension</b>	
L1xW1xH1 (mm)	7285×2520×3340 7430×2520×3340
Wheel base(L2) (mm)	2850 2850
Min. ground clearance(H3) (mm)	370 370
Max. dumping height(H2) (mm)	2930 2800
Maximum height of bucket hinge point (mm)	3790 3790
Dumping distance(L3) (mm)	1140 1245
Bucket width(W2)(mm)	2520 2520
Horizontal crossing radius(R1) (mm)	6065 6090
Min.turning radius(R2) (mm)	5250 5250